

*The Premium Plates and Boards On The Market Today*

### ALUMINUM DOCKPLATE

- Safety tread plate for positive traction
- Handles provided for easy positioning
- Fixed Legs
- Capacity up to 11,600 lbs. Varies by plate
- Legs and Handles painted Safety yellow
- Widths from 36" to 72"
- Lengths from 24" to 84"

Aluminum Dock Plates are designed for pallet truck and hand truck applications. For motorized applications, we recommend Aluminum Dock Boards.

**IN STOCK**



### FLEXPLATE

#### FPA 3/8"

Model #	Cap.	H.D.	Width	Length
FPA3636	3200	3	36	36
FPA4836	3700	5	48	36
FPA4848	2800	7	48	48
FPA4860	2200	9	48	48

#### FPB 1/2"

Model #	Cap.
FPB4836	6300
FPB4848	4800

Most popular sizes

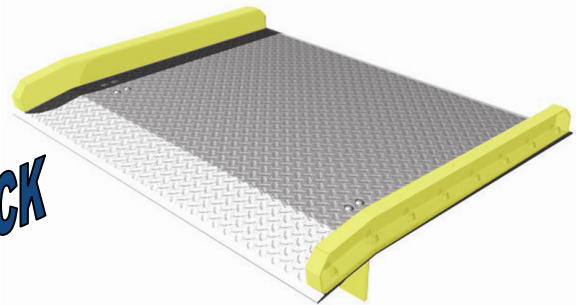
### QUICK SHIP

**SHIP IN 2 BUSINESS DAYS**

### ALUMINUM DOCKBOARDS with STEEL SIDE CURBS

- Aluminum/steel combo provides strength, durability and resilience
- Safety tread plate for positive traction
- Lifting chain available upon request
- Bolted, locking legs add safety during loading/unloading
- Side curbs and legs painted safety yellow
- Widths from 54" to 72"
- Lengths from 30" to 96"

**IN STOCK**



### FLEXBOARD

#### 10,000 lbs. Capacity

Model #	H.D.	Width	Length
10FB6036	5	60	36
10FB6048	9	60	48
10FB6060	7	60	60

#### 15,000 lbs. Capacity

Model #
15FB6048
15FB6060

Most popular sizes

**Contact us today for additional size  
Aluminum Plates, Dockboards,  
Steelboards and Railboards**

355 Industrial Drive  
Harrison, OH 45030  
Ph 800-333-0080  
Ph 513-367-0080  
Fax 513-367-0081  
[sales@heartland-ep.com](mailto:sales@heartland-ep.com)  
[www.heartland-ep.com](http://www.heartland-ep.com)

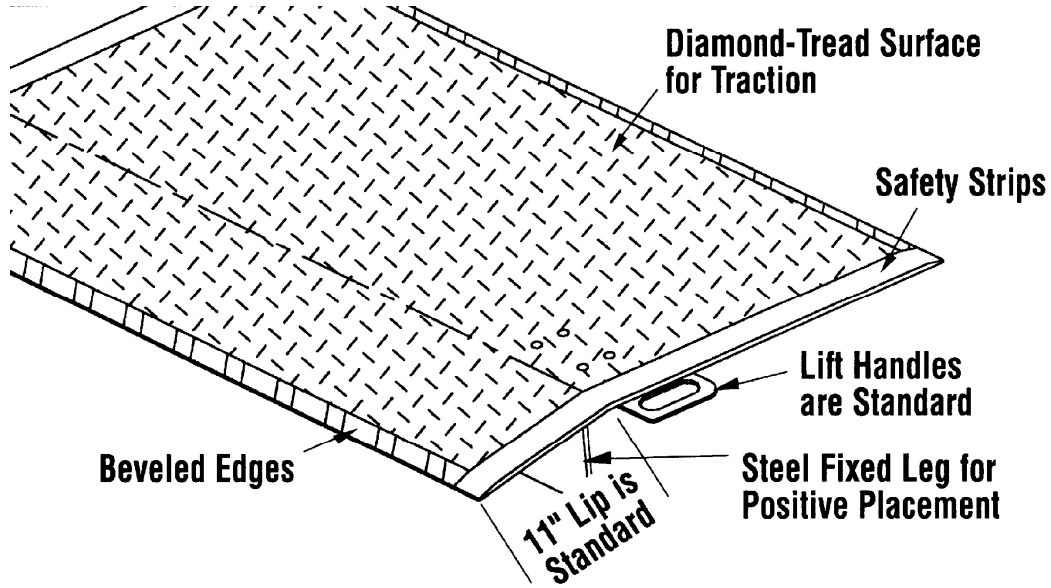
# HEARTLAND

ENGINEERED PRODUCTS

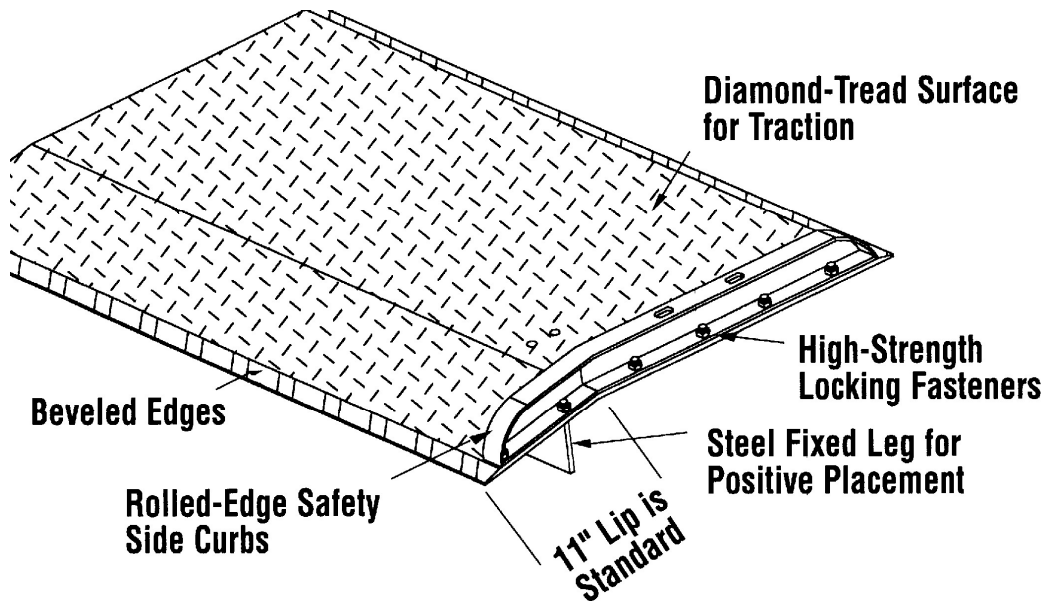
---

---

## Aluminum Dockplate



## Aluminum Dockboard



Phone 800-333-0080 Fax 513-367-0081  
Email : [sales@heartland-ep.com](mailto:sales@heartland-ep.com)  
[www.heartland-ep.com](http://www.heartland-ep.com)