

Label Holders Pay You In Time Saved Over and Over!

Here's How...

Simple and quick designation or location change

Insertable plastic label holders make it easy to change a label or location. Simply re-mark the insert and slide it into the holder.

Better Organization of Storage

Every efficient storage facility must know where everything is - All of the time. This would be much easier to accomplish if products and locations did not change, but they do and that's when problems develop. Label Holders are a management tool that offer a solution. They even make a better working environment for the employees to be more productive.

Cost Justification is Easy

Whatever the initial investment is for a Label Holder System, it has been very well documented that payback in materials, labor and overall efficiency will be justified by:

- Ease of normal label changes
- Cost savings of 50% in label materials
- 65% Minimum savings in labor to apply and remove self-adhesive labels - No more clean up time!

Protecting Bar Codes is a Must

Barcodes must be protected from dirt, moisture and chemicals to prevent an inaccurate scan that could result in an inventory discrepancy or possibly even a lost customer. Aigner's clear plastic insertable label holders ensure scanning compatibility while protecting the barcode.

Little or No Cost for Printing Labels

Most label holders are supplied with pre-perforated laser/ink-jet compatible sheets and simple printing instructions in a standard "word processing" format. Print neat and professional labels, in house, in advance or on-demand, at virtually no additional expense.

Label Holders for Every Storage Solution

We offer a wide selection of label holders with a choice of backings: permanent self adhesive for permanent applications, or removable self-adhesive, magnetic, and fabric hook and loop fasteners for label holder relocation versatility.

Here's a Short List of Solutions for the Major Storage Applications:



Aisle Signage -

Choose "Slip 'n Stik" insertable plastic aisle sign kits.



Pallet Racks -

Choose our "Super•Scan®" labeling system.



Steel Shelving -

Choose from several styles, including patented "Hol•Dex" in many size options, loading and backing styles.



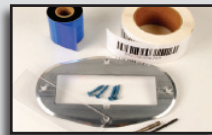
Wire Shelving -

"Wire•Rac" Label Holders offering four separate styles to fit most major brands of wire shelving.



Plastic Bins & Totes -

Choose "Bin•Buddys", featuring permanent self-adhesive backing engineered for smooth plastic surfaces.



Floor Storage -

Choose our Floor labeling kit with durable "oval" aluminum frame and clear Lexan protective cover.

Return On Investment

This is what it's all about. At what point does your label holder investment start to pay monetary returns? The results of case studies performed by major retailers confirm that the return on your initial investment will occur within a 12-month period after the purchase.

Aigner Label Holders are distributed through most national industrial supply companies: Grainger, McMaster-Carr, MSC Direct, Fastenal, C & H Distributors, Global Equipment, Lab Safety Supply and over 2,500 Material Handling Dealers Nationwide.

Contact:

Aigner Label Holder Corp. | 218 MacArthur Ave. | New Windsor, NY 12553
800.242.3919 | info@aignerlabelholder.com

www.aignerlabelholder.com

Learn How Label Holders Don't Cost...



They Pay!

ALH
AIGNER LABEL HOLDER

Application Chart

APPLICATION	BARCODES	ECONOMY	DURABILITY	LABEL CHANGES & RELOCATION
Pallet Racks	Super•Scan (3" x 5" & 4" x 6")	Super•Scan Gold (Self Adhesive)	Hol•Dex (2 1/2")	Open•Edge (3" x 5") & Slip•Strip
Aisle Signs	"Slip 'N Stik" Kit	-	-	-
Warehouse Signage	Super•Scan Gold (SS-911 & SS-912)	Super•Scan Gold (SS-911 & SS-912)	Job Ticket Holders/Zip Seal Pouches	Any
1" Steel Shelving	Hol•dex	Plain Magnets / Open Edge	Hol•dex	Slip•Strip/ Write-on Magnets
2" Steel Shelving	Hol•dex/ Super•Scan Gold	Plain Magnets / Open Edge	Hol•dex	Open•Edge/ Slip•Strip/ Write-on Magnets
Retail Shelving	Slip•Strip	Slip•Strip	Slip•Strip	Slip•Strip
Metro®/ Nexel® Wire Shelving	Wire•Rac	Wire•Rac	Wire•Rac	Wire•Rac
Metro Max "Q"™ Wire Shelving	Wire•Rac Max	-	-	-
Cari-All™ Wire Shelving	Wire•Rac Med	-	-	-
Flow Rack	Hol•dex (1 1/2" - 2")	Open•Edge (1 1/2" - 2")	Hol•dex	Any
Wire Mesh Deck	Snap-on Adapt-a-Strip	-	-	-
Wire Displays/ Baskets	Snap•Label	-	-	-
Parts Bins/ Drawers	Hol•dex	Open•Edge	Hol•dex	Slip•Strip
Plastic Bins (no slots)	Bin•Buddy (1" x 3" & 2" x 4")	-	-	-
Plastic Bins w/Label Slots	Tri•Dex™	-	-	-
Plastic Totes	Bin•Buddy (3" x 5" & 4" x 6")	-	-	-
Floor Storage	Floor Label Kit (Oval Frame)	-	-	-
"T" Slot Assemblies	"T" Slot Label Holder	-	-	-
Low Temp / Freezer	"Frig•ID" Kits	-	-	-
1" Diameter Pipe Assembly	AngleVision	-	-	-