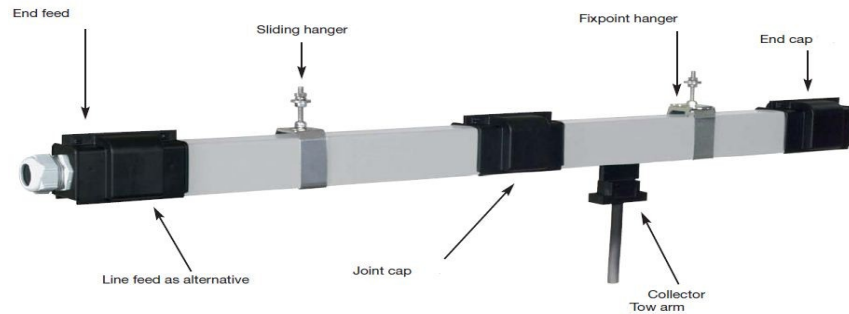


Volume 2 Feature:

VAHLE ENCLOSED CONDUCTOR BAR

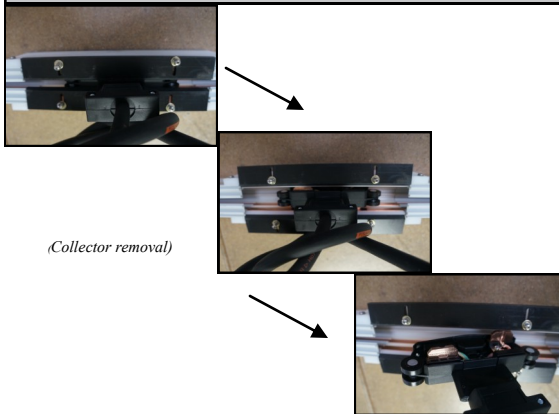


VAHLE enclosed multiple conductor systems offer a proven and reliable solution to many different electrification needs. Key benefits include:

- Versatility: 40—300 AMPs , PVC or Aluminum construction
- Reliability: Low maintenance , long life
- Fully Enclosed: Protected from harsh elements, accidental touch
- Simple and quick installation, compact design
- UL, IP 23, VDE Certification available*

Additional features offered by VAHLE include custom systems with curves and specialty sections.

Exclusive VAHLE Solution: Specialty Sections



VAHLE offers a wide variety of special enclosed sections for various tasks.

Key Sections include:

- Custom isolation sections - Create maintenance sections, test sections
- Collector removal sections - Easy collector maintenance
- Anti-condensation sections - Prevent harmful condensation during indoor-outdoor travel
- Air intake sections - For harsh environments, combines with sealing strip to provide positive air pressure
- Suitable for acid baths, galvanizing plants or sewage treatment facilities

A world of applications



From bridge cranes to galvanizing plants, VAHLE has an enclosed conductor solution for just about any application

Typical VAHLE applications include:

- Galvanizing plants
- Waste water treatment plants
- Appliance test loops
- Freezer applications
- Automated storage/retrieval systems
- Concrete Plants

DID YOU KNOW?

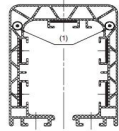
VAHLE provides a large variety of accessories for any enclosed bar



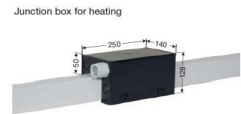
- Neoprene sealing strip - Debris defense, harmful fume defense
- Heating Cables - Outdoor applications, ice prevention
- Transfer funnels/guides - turn tables, switches and aisle entry/exit
- Cleaning brushes - Dust, oxidation and build up removal



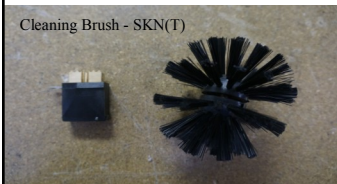
Sealing Strip - KSLT



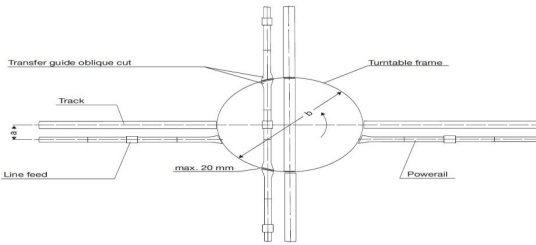
Arrangement of heating cable



Junction box for heating



Cleaning Brush - SKN(T)



Transfer Funnel (KBH)

VAHLE 101 - Install/Service Team



Led by Marvin Minton, Technical Applications Manager, and Jesse Velazquez, Installation Supervisor, VAHLE Inc provides world class installation, supervision, inspection and technical support for all VAHLE products.

Notable VAHLE work sites include:

- General Motors
- Boeing Company
- Universal Studios
- Ford Motor Company
- General Electric

Upcoming Trade Show Appearances



IAAPA - Orlando, FL Nov. 19-22 2013



MODEX 2014 - Atlanta, GA March 17-20 2014

VAHLE Webpage & Industry Links

1. <http://www.vahleinc.com/>
2. <http://www.youtube.com/user/vahleinc>
3. <http://www.iaapa.org/>
4. <http://www.modexshow.com/>
5. <http://www.mhi.org/cmaa>

ASK THE EDITOR

Questions? Comments?

Contact the editor

Peter Anchondo
Director of Marketing
panchondo@vahleinc.com