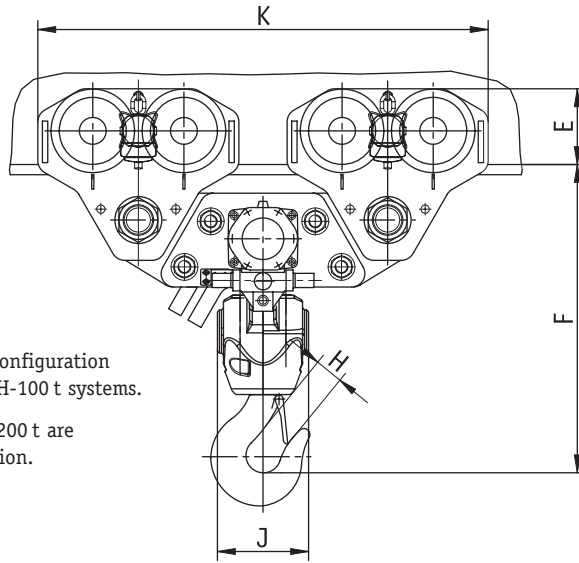


BH SERIES BOP HANDLING SYSTEMS



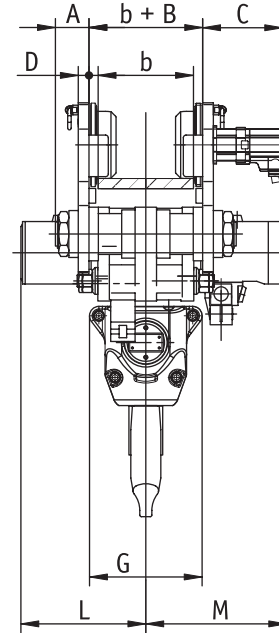
J.D. NEUHAUS
powered by air!

TECHNICAL DATA



Shown is two trolley configuration for BH-50 t through BH-100 t systems.

BH-150 t through BH-200 t are four trolley configuration.



Type		BH 40	BH 50	BH 60	BH 75	BH 80	BH 100	BH 120	BH 150	BH 200
Capacity (Metric Tons)	mt	40	50	60	75	80	100	120	150	200
Number of chain stands per unit*		4	2	2	3	3	4	4	3	4
Motor output per unit* Trolley	kW	0.7	1.4	1.4	1.4	1.4	1.4	1.4	2.8	2.8
Motor output per unit* Hoist	kW	3.5	6	6	6	6	6	6	10	10
Lifting speed without load	ft/min	4.59	7.55	7.55	5.25	7.55	3.61	7.55	2.79	2.13
	m/min	1.4	2.3	2.3	1.6	2.3	1.1	2.3	0.85	0.65
Lifting speed at full load	ft/min	2.30	3.61	2.79	2.13	1.97	1.64	1.15	1.48	1.15
	m/min	0.7	1.1	0.85	0.65	0.6	0.5	0.35	0.45	0.35
Lowering speed at full load	ft/min	5.25	6.23	7.55	4.92	5.25	2.95	3.61	3.28	2.46
	m/min	1.6	1.9	2.3	1.5	1.6	0.9	1.1	1.0	0.75
Travelling speed without load	ft/min	44	44	44	44	44	44	44	44	44
	m/min	13.5	13.5	13.5	13.5	13.5	13.5	13.5	13.5	13.5
Travelling speed at full load	ft/min	39	39	39	39	39	39	39	39	39
	m/min	12	12	12	12	12	12	12	12	12
Air consumption per unit* Trolley	cfm	46	92	92	92	92	92	92	184	184
	m3/min	1.3	2.6	2.6	2.6	2.6	2.6	2.6	5.2	5.2
Air consumption per unit* Hoist	cfm	142	195	195	195	195	195	195	390	390
	m3/min	4	5.5	5.5	5.5	5.5	5.5	5.5	11	11
Air connection	inch.	G 3/4	G 1 1/2	G 1 1/2	G 1 1/2	G 1 1/2	G 1 1/2	G 1 1/2	G 1 1/2	G 1 1/2
Weight with standard lift & chain container (total system)	lbs	3,650	4,860	4,860	8,680	8,680	9,850	9,850	20,490	29,990
	kg	1,660	2,210	2,210	3,945	3,945	4,475	4,475	9,315	13,630
Chain dimension	mm	16 x 45	23.5 x 66	23.5 x 66	23.5 x 66	23.5 x 66	23.5 x 66	23.5 x 66	31.5 x 90	31.5 x 90
Weight of chain	lbs/ft	3.9	8.2	8.2	8.2	8.2	8.2	8.2	14.3	14.3
	kg/m	5.8	12.2	12.2	12.2	12.2	12.2	12.2	21.3	21.3
Standard lift	feet	30	30	30	30	30	30	30	30	30
	m	9.1	9.1	9.1	9.1	9.1	9.1	9.1	9.1	9.1

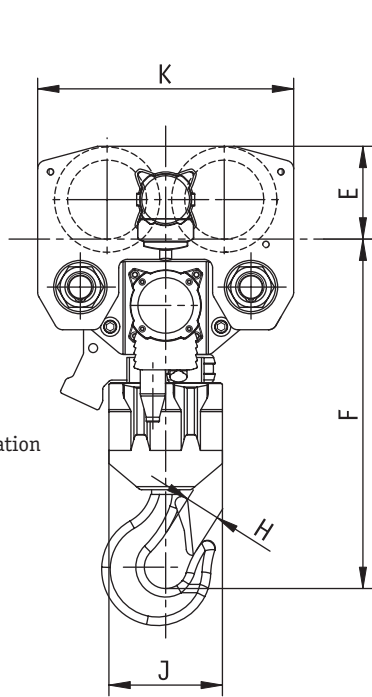
*Each of the BH BOP handling systems consists of a pair of monorail hoist units.

FEATURES AT A GLANCE:

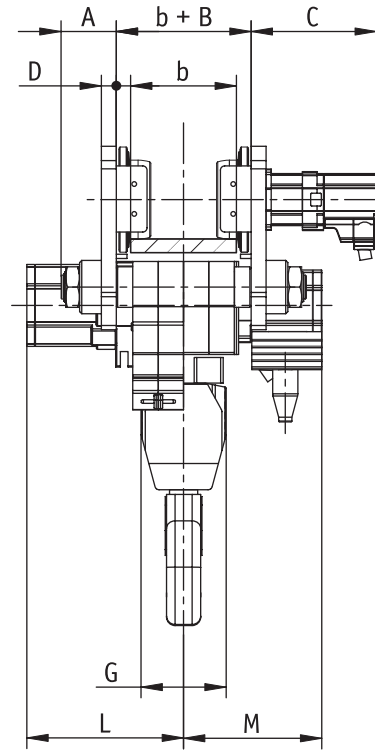
■ Explosion Proof Components	Standard
■ Compact Low Headroom Design	Standard
■ Efficient High Performance Vane Motor	Standard
■ Rugged All Steel Construction	Standard
■ Corrosion Resistant Coating System	Standard
■ Chain Containers	Standard
■ Full Emergency Stop system	Standard
■ Overload Protection	Standard
■ Galvanized Load Chain	Standard
■ Stainless Steel Fasteners	Standard
■ Filter, Regulator Lubricator	Standard
■ All Brass Push Button Control Valve	Standard
■ Trolley Anti Drop and Anti Climb System	Standard
■ 30 Feet of Lift	Standard
■ 50% of Trolley Wheels Powered	Standard
■ Paper and Electronic Complete Documentation Packages	Standard

OPTIONS

- Positive Rack & Pinion Trolley Drive
- Custom Design Clevis Attachments to Replace Load Hook
- Longer Lifts
- Hydraulic Operation



Shown is one trolley configuration as used on BH-40 t system.



b = beam flange width

Type		BH 40	BH 50	BH 60	BH 75	BH 80	BH 100	BH 120	BH 150	BH 200
A	inch.	5.12	5.75	5.75	3.94	3.94	4.92	4.92	3.94	4.92
	mm	130	146	146	100	100	125	125	100	125
B	inch.	2.68	2.76	2.76	2.68	2.68	2.68	2.68	2.68	2.68
	mm	68	70	70	68	68	68	68	68	68
C	inch.	11.30	10.91	10.91	11.30	11.30	11.50	11.50	11.30	11.50
	mm	287	277	277	287	287	292	292	287	292
D	inch.	1.38	0.98	0.98	1.38	1.57	1.57	1.57	1.38	1.57
	mm	35	25	25	35	35	40	40	35	40
E	inch.	8.66	7.80	7.80	8.66	8.66	11.14	11.14	8.66	11.14
	mm	220	198	198	220	220	283	283	220	283
F* min. headroom	inch.	32.28	39.29	39.29	42.13	42.13	45.28	45.28	58.27	60.43
	mm	820	998	998	1070	1070	1150	1150	1480	1535
G	inch.	7.95	6.69	6.69	7.48	7.48	16.54	16.54	11.26	22.64
	mm	202	170	170	190	190	420	420	286	575
H	inch.	2.95	2.95	2.95	3.94	3.94	3.94	3.94	4.72	4.72
	mm	75	75	75	100	100	100	100	120	120
J	inch.	10.47	13.78	13.78	17.91	17.91	13.39	13.39	29.13	18.50
	mm	266	350	350	455	455	340	340	740	470
K	inch.	23.62	46.65	46.65	68.11	68.11	66.14	66.14	126.38	123.23
	mm	600	1185	1185	1730	1730	1680	1680	3210	3130
L	inch.	14.45	14.84	14.84	14.92	14.92	18.19	18.19	25.20	30.00
	mm	367	377	377	379	379	462	462	640	762
M	inch.	12.80	18.70	18.70	16.93	16.93	22.05	22.05	25.79	29.53
	mm	325	475	475	430	430	560	560	655	750

*Chain container increases dimensions.

FOR OPERATION IN THE TOUGHEST ENVIRONMENTS

FROM 40 TON TO 200 TON CAPACITY, AIR PRESSURE 85 PSI (6 BAR)

J.D. Neuhaus BOP Handling Systems are known for their reliable, robust and efficient operation on land, jack-up, and semi-submersible drilling rigs.

A history of performance ... from areas of thick humidity and dust to hazardous atmospheres of high corrosion, contamination and risk of explosion ... make J.D. Neuhaus one of the most trusted names in hoists.

The monorail hoists in our BOP Handling Systems feature a compact design with very low headroom. And our technical representatives will work closely with your crew to ensure that approved installation and maintenance procedures are followed – for trouble-free operation and long service life.

Plus, the hoist have a proven and patented motor brake system, reduced noise levels, high lifting and lowering speeds, an emergency valve on the main air supply, and newly designed overload protection.

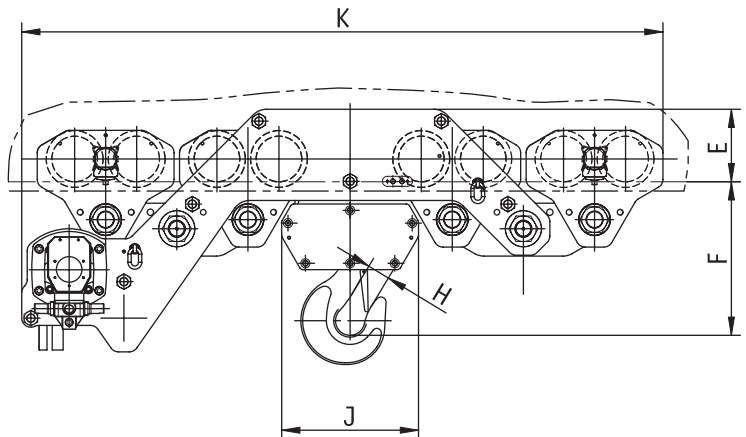
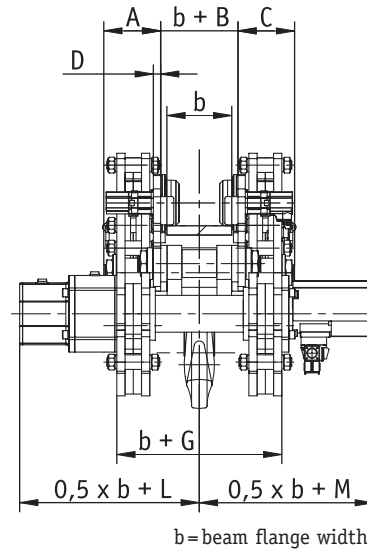
Our hoists can be used as double lifting gear as in standard BOP handling systems or they can be connected by a coupling rod for use as a four point BOP handling systems.

Our trolley wheels are designed to operate on I-beams with either tapered or parallel flanges. Adjustable to all standard beam sizes or specially fabricated I-beams, JDN BOP Handling Systems come standard with 30 feet of lift, chain container, service units mounted to the trolley plate, emergency stop valve, anti-corrosion package and offshore paint.

For efficient traction on the beam, 50% of the loaded wheels are powered.

Type		BHU 200
A	inch.	13.58
	mm	345
B	inch.	2.68
	mm	68
C	inch.	13.58
	mm	345
D	inch.	1.57
	mm	40
E	inch.	15.67
	mm	398
F* min. headroom	inch.	33.15
	mm	842
G	inch.	21.65
	mm	550
H	inch.	4.72
	mm	120
J	inch.	29.53
	mm	750
K	inch.	138.39
	mm	3515
L	inch.	31.77
	mm	807
M	inch.	30.59
	mm	777

*Chain container increases dimensions.



J.D. NEUHAUS
powered by air!

CUSTOM ENGINEERED TO MEET YOUR SPECIFIC OFFSHORE NEEDS

FROM 40 TON TO 200 TON CAPACITY,
AIR PRESSURE 85 PSI (6 BAR)

For the unique conditions of the offshore industry, we specialize in custom low-headroom configurations. Call our technical sales department for information.

For extreme requirements UH series systems are available which require a minimum amount of space while delivering maximum performance.

HYDRAULIC DRIVES ALSO AVAILABLE FOR OFFSHORE APPLICATIONS

JDN HYDRAULIC MONORAIL HOISTS (EH-H),
20-TON TO 200-TON CAPACITY

All of our hoists are available with optional hydraulic drives and comprehensive Offshore Protection Packages. Visit our website for more information and many other options.

For further information about our hydraulic hoists for offshore applications, contact our technical sales department. All pneumatic hoists in the JDN line are available with hydraulic drives.



Trolleys reconfigured for "C" profile beam (UH-75C)



100-ton capacity with less than 24" of headroom (UH-100)



EH 20



EH 50



EH 100 in standard configuration.

Your Distributor:

