

# ID TECHNOLOGY®

L&C

LABELING  
& CODING

## POWERMERGE™ Label Applicator Module



### Designed for high speed print-apply barcode labeling

ID Technology builds the best selling line-up of print and apply labeling systems. One of the reasons for this success is the wide range of applicator modules, enabling the labeling systems to handle just about every conceivable job.

PowerMerge is a label applicator module, designed to be used with the 252 and 255 label printer applicators. PowerMerge uses a driven vacuum belt to transfer the label from the print engine to the point of application.

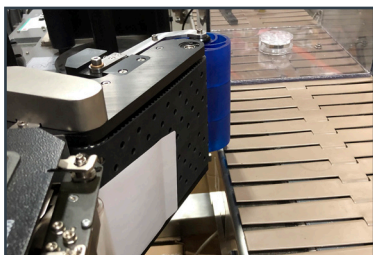
The PowerMerge module has the effect of decoupling the print speed from the application speed, allowing labels to be applied at faster conveyor speeds than other applicator types.

PowerMerge is available in two versions - PowerMerge for labels up to 15" long and Mini PowerMerge for up to 9" long labels.

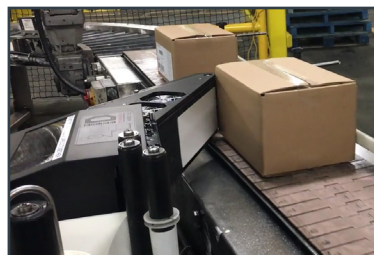
Mini PowerMerge allows two printer applicators to be positioned close together for zero downtime applications.

#### FEATURES AND BENEFITS

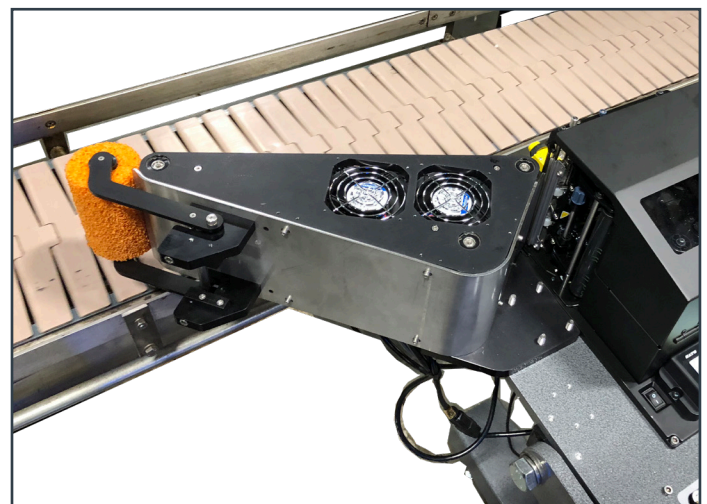
- High-speed labeling - conveyor speeds over 200 ft/min.
- Can be used with ID Technology 252 and 255 labeling systems.
- Designed for labeling cases and trays.
- Powered vacuum belt gently transports labels from print engine to product.
- Can apply labels to side of pack as well as corner-wrap (with secondary wipe unit).
- Various size labels from 2" x 2" to 6" x 15" (4 x 9" for Mini PowerMerge).
- Easily reaches 6" across conveyor (3" for Mini PowerMerge).
- No plant air needed.



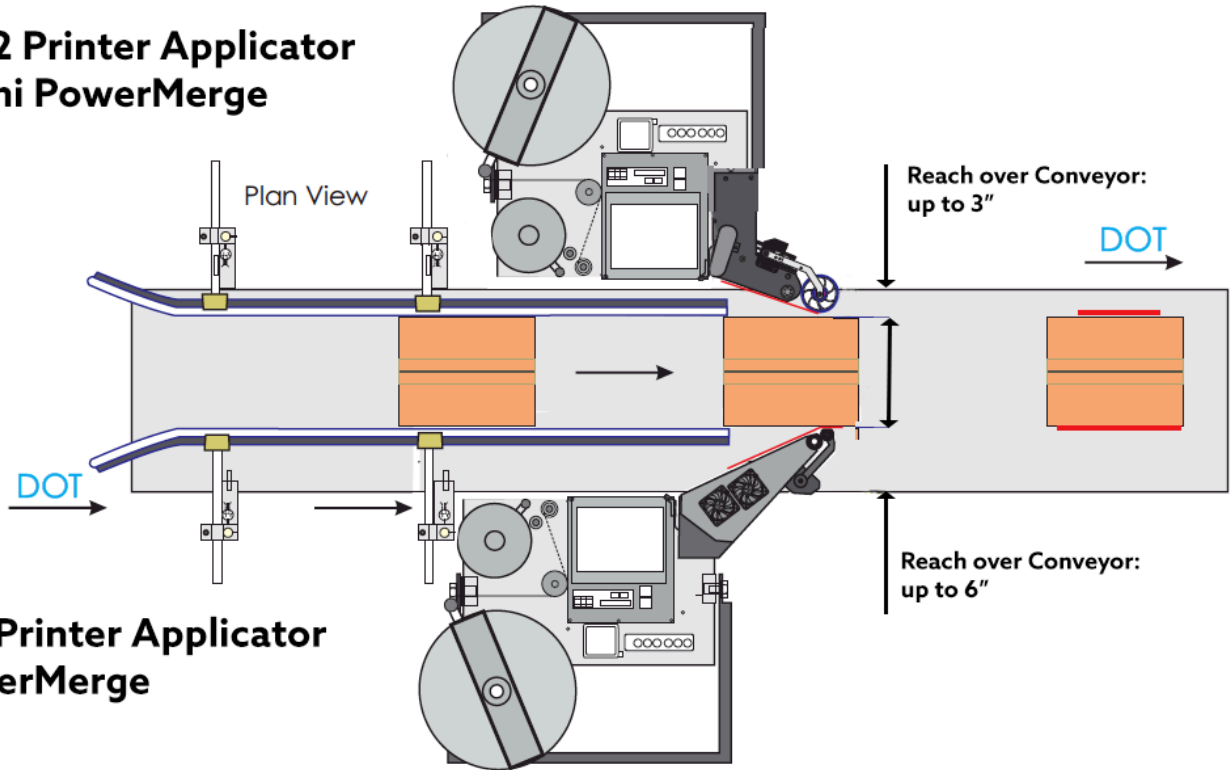
Mini PowerMerge



PowerMerge



**252 Printer Applicator  
 Mini PowerMerge**



**252 Printer Applicator  
 PowerMerge**

**SPECIFICATIONS**

<b>CONVEYOR SPEED</b>	<b>UNLIMITED</b>
<b>MAX LABEL SIZE</b>	<b>6" X 15" (4" X 9" MINI POWER-MERGE).</b>
<b>MIN LABEL SIZE</b>	<b>2" X 2"</b>
<b>VACUUM BELT SPEED</b>	<b>MAX 175 FT/MIN</b>
<b>MAX REACH OVER CONVEYOR</b>	<b>6" (3" MINI POWERMERGE).</b>



*Complimentary Limited  
 Lifetime Equipment Warranty*

For customers using ID Technology labels with our labeling systems, we provide a lifetime equipment warranty free of charge. Just ask us for details!