



HF Series Chargers

Conventional, Opportunity and Fast

No charger is more efficient or safer for your battery fleet.

USA Made!

LATEST TECHNOLOGY!

Changing batteries takes time away from moving product and can lead to accidents. Our HF series high frequency chargers allow you to keep the battery in the truck saving time and keeping the work place safe.

Cooler batteries last longer. The HF series consistently delivers the coolest charge to the battery even at higher charge rates!

Intelligent, modular design. If a module fails the others will continue to operate.

Constant communication between battery and charger for perfect charge every time.

Graphic Icon display allows quick identification of charge status and "ready" battery.

24 pre-loaded charger algorithms to charge any battery chemistry, including Lithium Ion.

California Energy Commission CEC and Underwriters Labs listed.



BENEFITS

Cooler, safest charge for your battery

Eliminate battery changes.

Increase driver productivity.

Lower Energy costs!



FEATURES

Less time on charge.

Multi voltage capable.

Conventional, Opportunity or fast charge

Small, lightweight modular design



INTELENT CHARGING



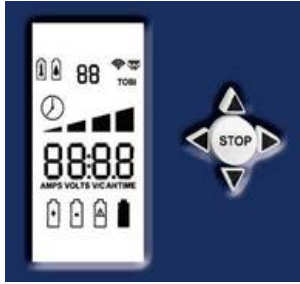
Charging Technologies, Inc.
4328 Bridgeton Industrial Drive
Bridgeton, Missouri 63044

Phone: 314-739-1414
Fax: 314-739-1277
E-mail: sales@chargingti.com
www.chargingtechnologiesinc.com

High Frequency charging solutions

High Frequency Charger selector Guide

CHARGER COMMUNICATION



P46-303 Control
Wireless
Communication from
charger to computer.



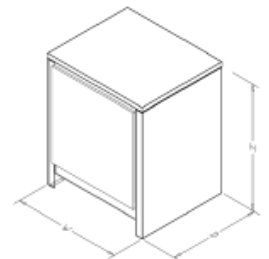
BATTERY COMMUNICATION



TOBi PI Wi-Z Wireless
Communication between
battery and charger and
battery and computer.

Cells	DCV *	MAX DC AMPS	ACV	ACA	Model number	Standard 8 HR Charge Battery A/H range	25% OPP. Charge Battery A/H Range	40% FAST. Charge Battery A/H Range
12	24	65	480	2.5	24-1A-E3	0-390	0-260	0-160
12	24	130	480	4.9	24-1B-E3	391-780	261-520	161-330
12	24	195	480	7.4	24-1A1B-E3	781-1170	521-780	331-490
12	24	260	480	9.8	24-2B-E3	1171-1570	781-1040	491-650
12	24	325	480	12.3	24-1A2B-E3	1571-1960	1041-1300	651-810
12/18	24/36	50	480	2.8	36-1A-E3	0-300	0-200	0-130
12/18	24/36	100	480	5.6	36-1B-E3	301-600	201-400	131-250
12/18	24/36	150	480	8.4	36-1A1B-E3	601-900	401-600	251-380
12/18	24/36	200	480	11.2	36-2B-E3	901-1170	601-750	381-470
12/18	24/36	200	480	11.2	36-2B-E3+	1171-1139	751-865	471-500
12/18	24/36	250	480	14.0	36-1A2B-E3	1141-1510	866-1050	501-630
12/18	24/36	300	480	16.8	36-3B-E3	1511-1810	1051-1200	631-750
12/18	24/36	350	480	19.6	36-1A3B-E3	1811-2110	1201-1400	751-880
12/18	24/36	400	480	22.4	36-4B-E3	2111-2410	1401-1600	881-1000
12/18/24	24/36/48	37	480	2.8	48-1A-E3	0-220	0-148	0-90
12/18/24	24/36/48	75	480	5.6	48-1B-E3	221-450	149-300	91-190
12/18/24	24/36/48	112	480	8.4	48-1A1B-E3	451-670	301-448	191-280
12/18/24	24/36/48	150	480	11.2	48-2B-E3	671-900	448-600	281-380
12/18/24	24/36/48	187	480	14.0	48-1A2B-E3	901-1130	601-750	381-470
12/18/24	24/36/48	225	480	16.8	48-3B-E3	1131-1360	751-865	471-540
12/18/24	24/36/48	225	480	16.8	48-3B-E3+	1131-1360	866-965	541-560
12/18/24	24/36/48	262	480	19.6	48-1A3B-E3	1161-1580	966-1048	561-660
12/18/24	24/36/48	300	480	22.4	48-4B-E3	1581-1810	1049-1200	661-750
36/40	72/80	23	480	2.8	80-1A-E3	0-140	0-92	0-60
36/40	72/80	45	480	5.6	80-1B-E3	141-270	93-180	61-110
36/40	72/80	68	480	8.4	80-1A1B-E3	271-410	181-272	111-170
36/40	72/80	90	480	11.2	80-2B-E3	411-540	272-360	171-230
36/40	72/80	113	480	14.0	80-1A2B-E3	541-680	361-452	231-280
36/40	72/80	135	480	16.8	80-3B-E3	681-810	453-540	281-340
36/40	72/80	158	480	19.6	80-1A3B-E3	811-950	541-632	341-400
36/40	72/80	180	480	22.4	80-4B-E3	951-1080	633-720	401-450

CASE DIMENSIONS						
CASE	HEIGHT		WIDTH		DEPTH	
	IN	CM	IN	CM	IN	CM
900	22.60	66.04	13.13	33.34	14.63	37.15



Charging Technologies, Inc.
4328 Bridgeton Industrial Drive
Bridgeton, Missouri 63044

Phone: 314-739-1414
Fax: 314-739-1277
E-mail: sales@chargingti.com
www.chargingtechnologiesinc.com