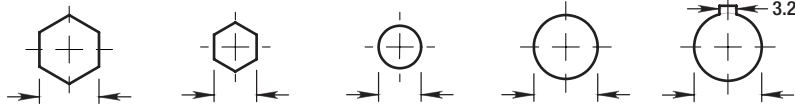



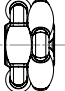

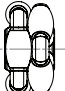

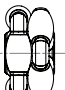


48mm Rotacasters

Bores (nominal)

with Acetal Bushing



Roller Type	Lateral Load Capacity	Hex 11.1	Hex 8	Plain Ø8	Plain Ø12	Keyed Ø12.7	for Ø12.7 keyed bore Ø8	
 65A Polyurethane Roller on Acetal bushing	18 kg*	R1-0484-6561	R1-0484-6568	---	---	---	---	---
		R2-0484-6561	R2-0484-6568	R2-0484-6508	R2-0484-6512	R2-0484-6501	R2-0484-65/D07	R2-0484-65/D08
 90A Polyurethane Roller on Acetal bushing	30 kg*	R1-0484-9061	R1-0484-9068	---	---	---	---	---
		R2-0484-9061	R2-0484-9068	R2-0484-9008	R2-0484-9012	R2-0484-9001	R2-0484-90/D07	R2-0484-90/D08
 Solid TCP Roller (No bushing)	40 kg*	R1-0484-9961	R1-0484-9968	---	---	---	---	---
		R2-0484-9961	R2-0484-9968	R2-0484-9908	R2-0484-9912	R2-0484-9901	R2-0484-99/D07	R2-0484-99/D08

Wheel Dimensions

All dimensions in mm

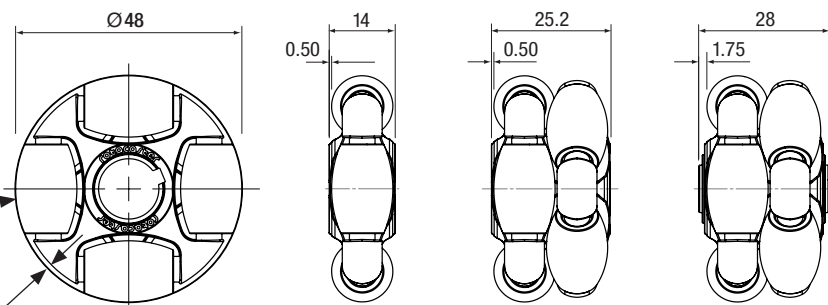
Weight:

Single 20gm

Double 38gm

Ø13 Roller

Nominal 1mm radial head clearance



Single wheel

Double wheel

Double wheel with bushing

Conversion

Metric	Imperial
3.2mm	1/8"
6.35mm	1/4"
8.00mm	5/16"
11.1mm	7/16"
12.7mm	1/2"
15.88mm	5/8"
25.4mm	1"
1 kg	2.2 lb

Load Capacity Notes: ■ 90A & Solid Rotacaster wheels have a maximum **Static Load Capacity** of 50kg. ■ **Lateral Load Capacity** refers to the maximum load capacity of each wheel to travel directly sideways without radial head contact. ■ The **Dynamic Load Capacity** (while in motion) ranges between the maximum **Static Load Capacity** and the **Lateral Load Capacity** and varies proportionally to speed of the wheel travelling in its primary direction.

* Single wheels must be combined with an adjacent wheel indexed to form a continuous circular circumference - load capacity is based on two adjacent single wheels.



Distributor

Rotacaster

1300 768 222

rotacaster.com.au

rotacaster
the ultimate in manoeuvrability



48mm Rotacaster Mounts

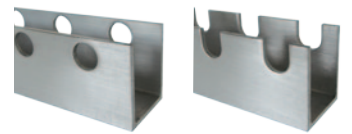
Steel Fork



Polymer Cup (Includes wheels)



Aluminium Channel (Only)



Protrusion 'A' 4 mm 7 mm 11 mm Holed Slotted



65A
Polyurethane
Roller on
Acetal bushing
Capacity 18 kg

R2-0484-65/MF

R2-0484-65/MC04

R2-0484-65/MC07

R2-0484-65/MC11

13-3008-13-H

13-3008-13-S



95A
Polyurethane
Roller on
Acetal bushing
Capacity 30 kg

R2-0484-90/MF

R2-0484-90/MC04

R2-0484-90/MC07

R2-0484-90/MC11

13-3008-13-H

13-3008-13-S



Solid
TCP Roller
(No bushing)
Capacity 40 kg

R2-0484-99/MF

R2-0484-99/MC04

R2-0484-99/MC07

R2-0484-99/MC11

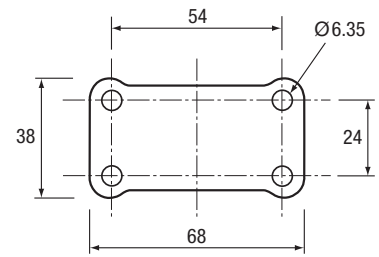
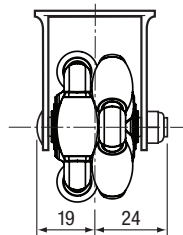
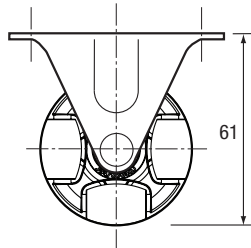
13-3008-13-H

13-3008-13-S

Forks

Zinc plated

Weight: 100 gm

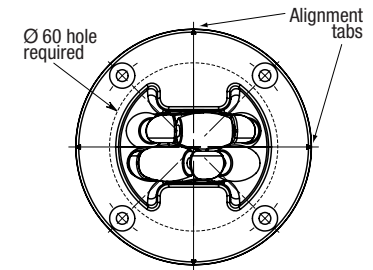
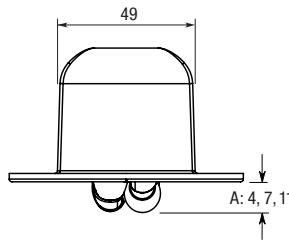
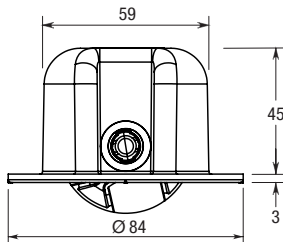


All dimensions in mm

Cups

Full polymer

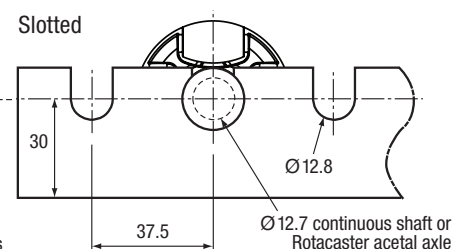
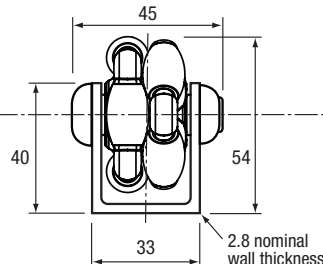
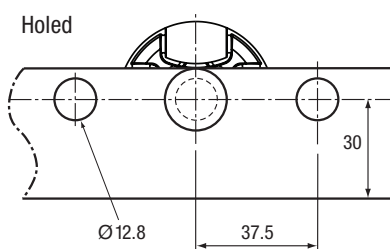
Weight: 80gm



Channels

Aluminium
Length 3.195m

Weight:
Holed 0.74kg/m
Slotted 0.72kg/m



10.048.12-02



Distributor

Rotacaster

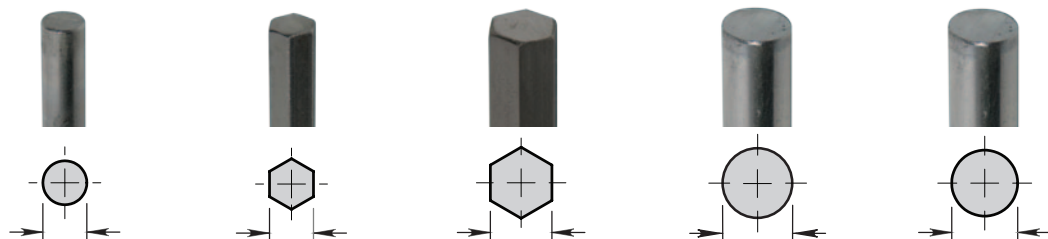
1300 768 222

rotacaster.com.au

rotacaster
the ultimate in manoeuvrability



48mm Rotacaster Accessories



Shafts	Ø8	8	11.1	Ø12.7	Ø12
--------	----	---	------	-------	-----

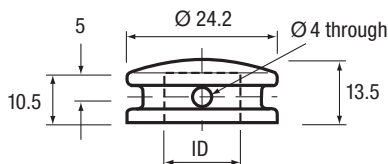
14-9702-08	14-9703-08	14-9703-11	14-9702-13	14-9702-12
------------	------------	------------	------------	------------

Nylon Bushings / Spacers	OD Ø12.7	Ø15.88	Ø15.88	Ø15.88
--------------------------	----------	--------	--------	--------



Length	ID Ø8	Ø10	Ø12.7	Ø12
25.2	13-9602-0813-025	13-9602-1016-025	13-9602-1316-025	13-9602-1216-025
50.4	13-9602-0813-050	13-9602-1016-050	13-9602-1316-050	13-9602-1216-050
75.6	---	13-9602-1016-075	13-9602-1316-075	13-9602-1216-075

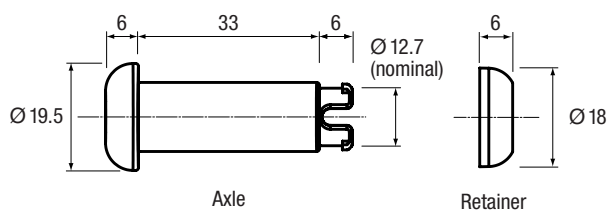
Nylon Axle Caps	Ø12.7 ID	Ø12 ID
-----------------	----------	--------



13-2022-13

13-2022-12

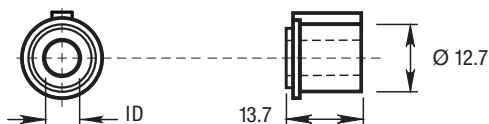
Acetal Axle and Retainer Cap	Ø12.7 Axle	Retainer Cap
------------------------------	------------	--------------



13-2002-13

13-2003-13

Acetal Flanged Bushing	Ø6.35 ID	Ø8 ID
------------------------	----------	-------



13-9605-0713F

13-9605-0813F



Distributor Rotacaster 1300 768 222



rotacaster.com.au

rotacaster
the ultimate in manoeuvrability