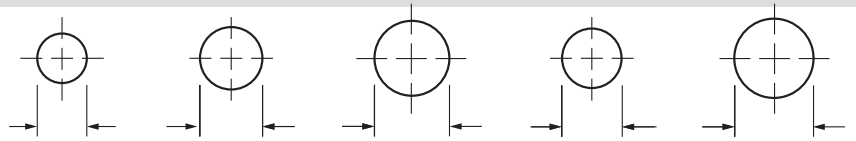

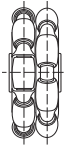

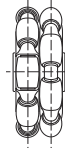






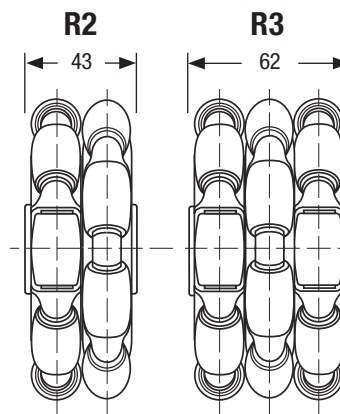
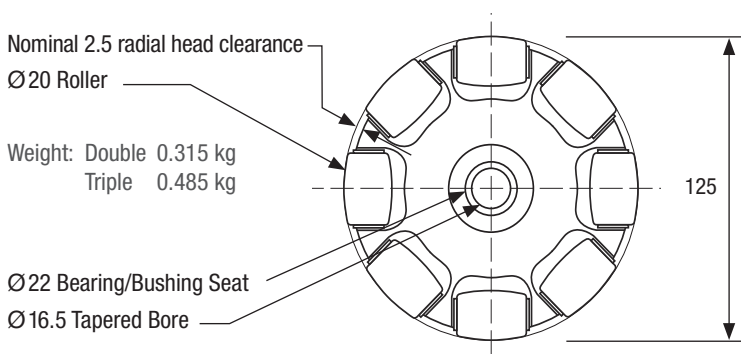
125mm Rotacasters

Bores (nominal)



| Roller Type | Load Capacity Lateral / Dynamic | Bush/Bearing | ID Ø8 | Ø10 | Ø12 | Ø9.52 | Ø12.7 |
|--|---|-----------------------|----------------|----------------|----------------|----------------|----------------|
|  85A Polyurethane Roller on Nylon bushing |  R2 68/115 Kg | R2-1258-85 No Bearing | | | | | |
| | | Nylon | --- | --- | R2-1258-85/N12 | --- | R2-1258-85/N13 |
| | | Shielded | --- | R2-1258-85/Z10 | --- | R2-1258-85/Z09 | --- |
| | | Sealed | R2-1258-85/S08 | R2-1258-85/S10 | R2-1258-85/S12 | --- | R2-1258-85/S13 |
|  95A Polyurethane Roller on Nylon bushing |  R2 68/125 Kg | R2-1258-95 No Bearing | | | | | |
| | | Nylon | --- | --- | R2-1258-95/N12 | --- | R2-1258-95/N13 |
| | | Shielded | --- | R2-1258-95/Z10 | --- | R2-1258-95/Z09 | --- |
| | | Sealed | R2-1258-95/S08 | R2-1258-95/S10 | R2-1258-95/S12 | --- | R2-1258-95/S13 |
|  95A Polyurethane Roller on Nylon bushing |  R3 80/160 Kg | R3-1258-95 No Bearing | | | | | |
| | | Nylon | --- | --- | R3-1258-95/N12 | --- | R3-1258-95/N13 |
| | | Shielded | --- | R3-1258-95/Z10 | --- | R3-1258-95/Z09 | --- |
| | | Sealed | --- | R3-1258-95/S10 | R3-1258-95/S12 | --- | R3-1258-95/S13 |

Wheel Dimensions (in mm)



Conversion

| Metric | Imperial |
|----------|----------|
| 3.18 mm | 1/8" |
| 6.35 mm | 1/4" |
| 8.00 mm | 5/16" |
| 9.52 mm | 3/8" |
| 11.10 mm | 7/16" |
| 12.70 mm | 1/2" |
| 15.88mm | 5/8" |
| 25.40 mm | 1" |
| 1 kg | 2.2 lb |

Lateral Load Capacity refers to the maximum load capacity of each wheel to travel directly sideways without radial head contact. ■ The **Dynamic Load Capacity** (while in motion) ranges between the maximum **Static Load Capacity** and the **Lateral Load Capacity** and varies proportionally to speed of the wheel travelling in its primary direction. ★ Single wheels are available upon request. ■ 12mm and 1/2" bush may require hub refit.



Distributor

Rotacaster

1300 768 222





rotacaster.com.au

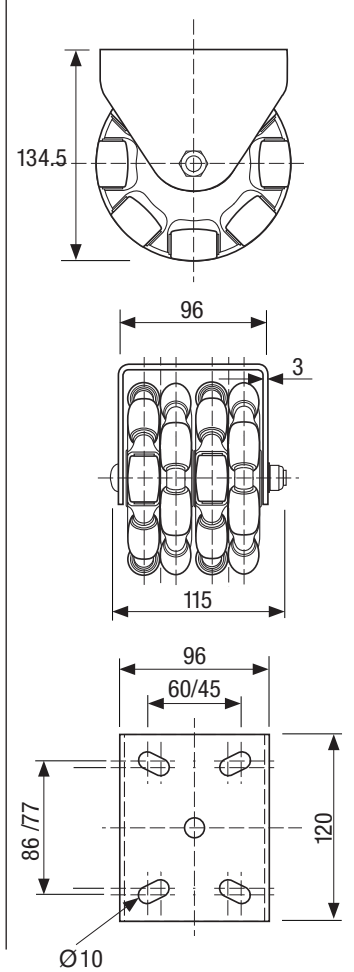
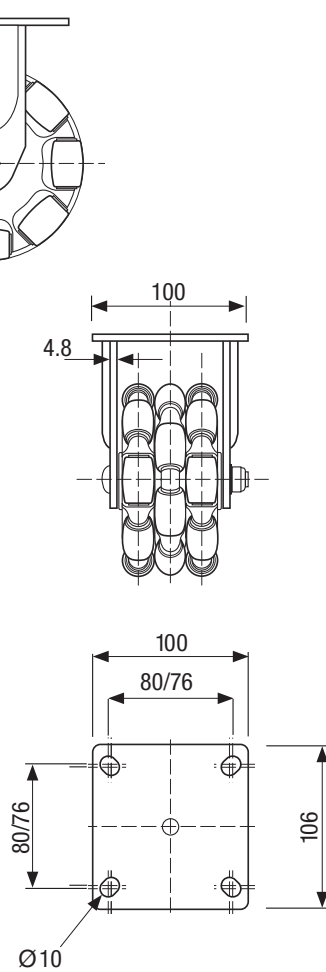
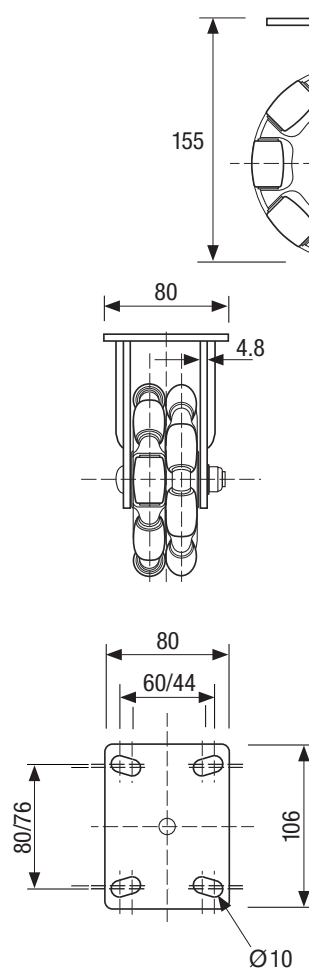
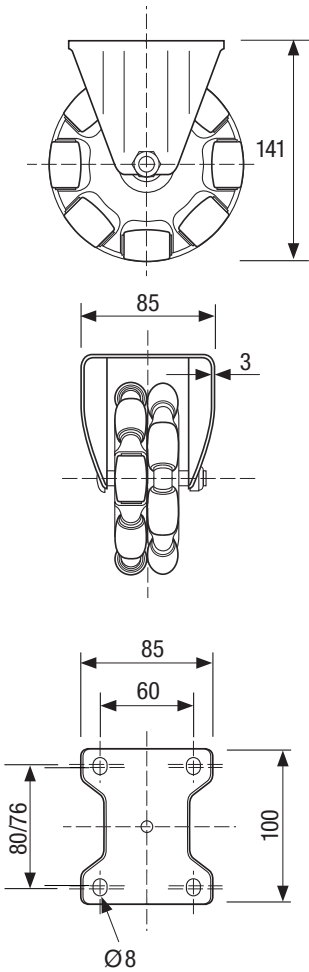
rotacaster
the ultimate in manoeuvrability



125 mm Rotacaster Single Mounts

Steel Fork - Zinc Plated

| | R2 Formed | R2 Welded | R3 Welded | R4 Formed |
|----------------------------------|---|---|--|---|
| |  |  |  |  |
| 85A | R2-1258-85/MF | R2-1258-85/MW | --- | R4-1258-85/MF |
| 95A | R2-1258-95/MF | R2-1258-95/MW | R3-1258-95/MW | R4-1258-95/MF |
| Load Capacity Lateral/Dynamic | 68/125 Kg | 68/125 Kg | 80/160 Kg | 120/220 Kg |



Distributor

Rotacaster

1300 768 222

rotacaster.com.au

rotacaster
the ultimate in manoeuvrability

125 mm Rotacaster Multi Mounts

Zinc Plated Mild Steel

1100 mm Mount Channel

320 mm /2 (Dynamic Capacity)

320 mm /3 (Dynamic Capacity)



Channel only
Kit: 11-9110



85A

R2-1258-85/MM2 (135 Kg)

R2-1258-85/MM3 (200Kg)

95A

R2-1258-95/MM2 (165 Kg)

R2-1258-95/MM3 (240Kg)



95A

R3-1258-95/MM2 (220Kg)

R3-1258-95/MM3 (300Kg)



85A

R4-1258-85/MM2 (220Kg)

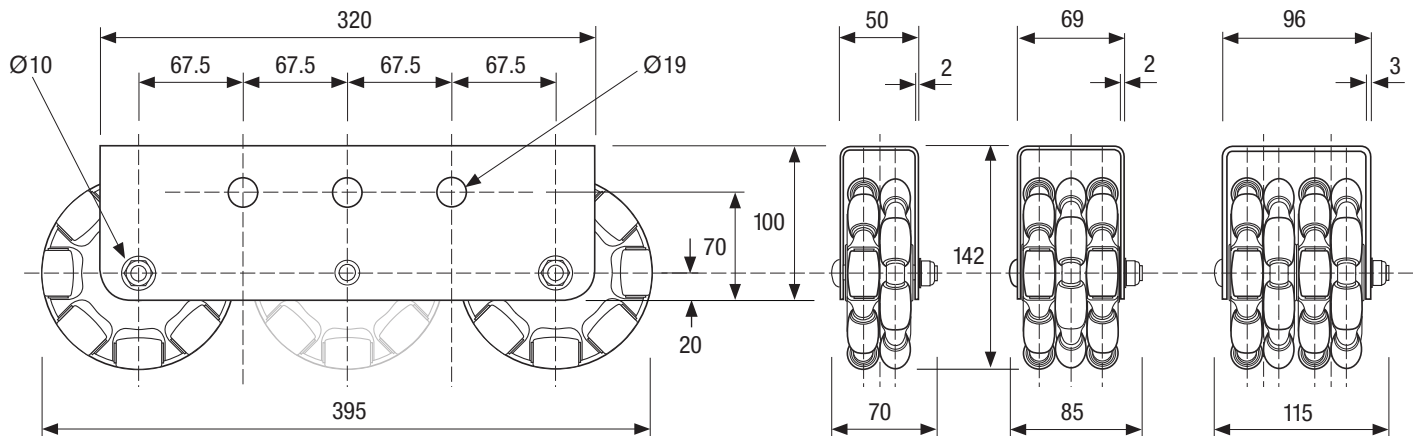
R4-1258-85/MM3 (300Kg)

95A

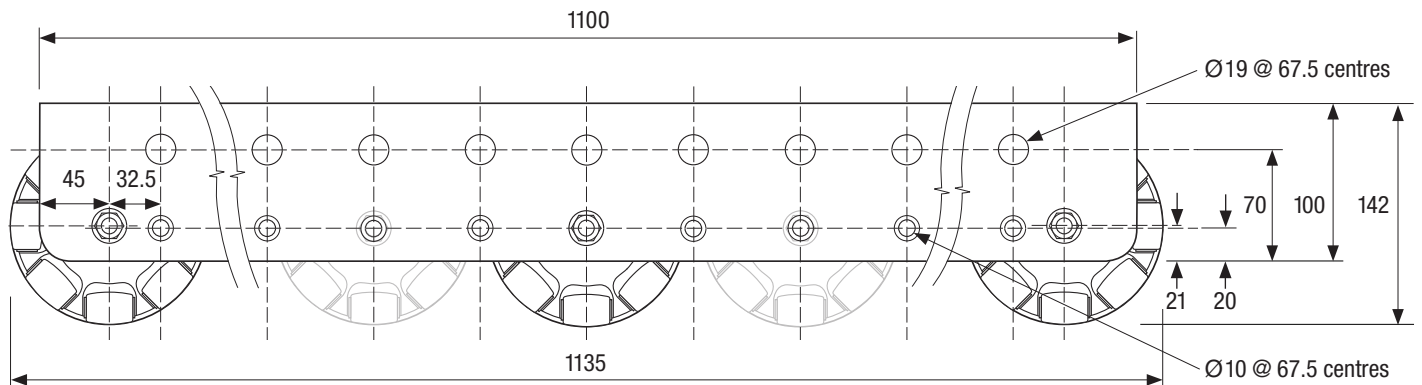
R4-1258-95/MM2 (250Kg)

R4-1258-95/MM3 (340Kg)

Multi Mounts 320mm



Multi Mounts 1100mm R4



Distributor

Rotacaster

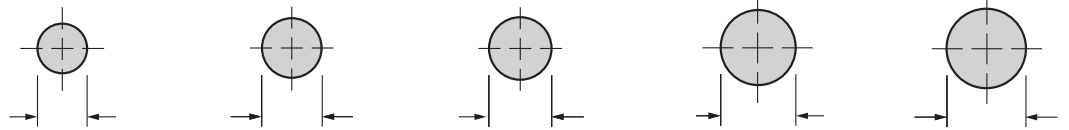
1300 768 222

rotacaster.com.au

rotacaster
the ultimate in manoeuvrability

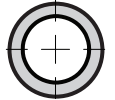
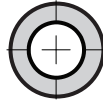


125mm Rotacaster Accessories



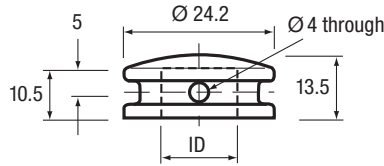
| Bores | Ø8 | Ø9.52 | Ø10 | Ø12 | Ø12.7 |
|-------|----|-------|-----|-----|-------|
|-------|----|-------|-----|-----|-------|

| Nylon Bushings / Spacers | OD Ø12.7 | Ø15.88 | Ø15.88 | Ø15.88 |
|--------------------------|----------|--------|--------|--------|
|--------------------------|----------|--------|--------|--------|



| Length | ID Ø8 | Ø10 | Ø12 | Ø12.7 |
|--------|------------------|------------------|------------------|------------------|
| 25.2 | 13-9602-0813-025 | 13-9602-1016-025 | 13-9602-1216-025 | 13-9602-1316-025 |
| 50.4 | 13-9602-0813-050 | 13-9602-1016-050 | 13-9602-1216-050 | 13-9602-1316-050 |
| 75.6 | --- | 13-9602-1016-075 | 13-9602-1216-075 | 13-9602-1316-075 |

| Nylon Axle Caps | Ø12 ID | Ø12.7 ID |
|-----------------|--------|----------|
|-----------------|--------|----------|



| | | |
|--|------------|------------|
| | 13-2022-12 | 13-2022-13 |
|--|------------|------------|

Floor Brakes

150mm Lift-Up Floor Lock
11-9002

Mounting height: 142mm
Load capacity: 200Kg



137mm Friction Lock
11-9003

Mounting height: 132mm
Load capacity: 770Kg



Distributor Rotacaster 1300 768 222

rotacaster.com.au

rotacaster
the ultimate in manoeuvrability