

BEH5 Series Truck Service

HYDRAULIC DOCK LEVELER 20,000, 30,000, 40,000, 50,000 & 60,000 lb. CAPACITIES

ARCHITECTURAL SPECIFICATIONS

GENERAL

The BEH5 Series pit mounted hydraulic dock levelers are available in one heavy duty style.

BEH5 Series - Two movement with 16" hinged flip lip.

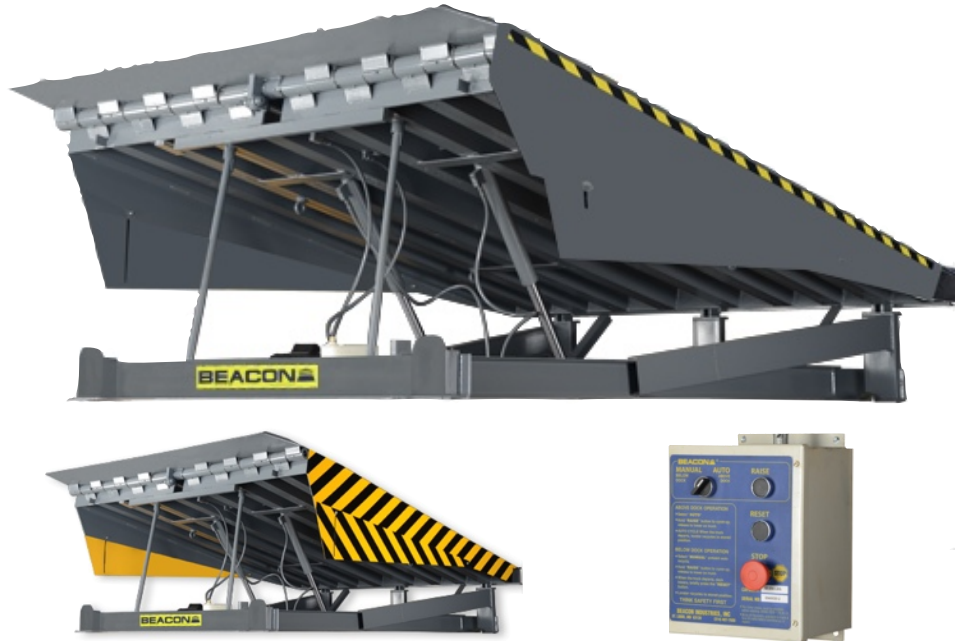
DESCRIPTION

Adjustable hydraulic dock leveler with two movements: (1) Up, (2) down. Dock leveler to be _____ ft. long x _____ ft. wide with a static capacity of _____ lbs. Platform to be constructed of floor plate rein-forced by C channel deck support beams. Units are powered with a 2 HP, 2 GPM pump that activates the deck hydraulic cylinder. The deck and 16" hinged flip lip extends onto the vehicle when the start button is depressed. The BEH5 Leveler automatically recycles to stored cross traffic position when the vehicle departs or may be recycled with the vehicle at the dock. 24" total Vertical travel, 12" above floor level and 12" below floor level for 23 1/2" dock leveler frames. Deck will compensate a maximum of 4" from side to side to service unlevel vehicles. Dock leveler is constructed of 55,000 lb. minimum yield steel tread plate. Dock leveler to be equipped with full operating range toe guards and a set of dock bumpers. Dock leveler to meet the performance requirements of OSHA and ANSI MH14.1-1984.

DIMENSIONS

NOTE: The sizes below are nominal lengths.

MODEL	CAP. (LBS.)	WIDTH	NOMINAL LENGTH	DEPTH	WEIGHT
BEH561120	20,000	72"	11"	23 1/2"	2790
BEH561220	20,000	72"	12"	23 1/2"	3425
BEH561120.5	20,000	78"	11"	23 1/2"	2825
BEH561220.5	20,000	78"	12"	23 1/2"	3460
BEH571120	20,000	83"	11"	23 1/2"	2845
BEH571220	20,000	83"	12"	23 1/2"	3495
BEH581120	20,000	96"	11"	23 1/2"	2753
BEH581220	20,000	96"	12"	23 1/2"	3545
BEH561130	30,000	72"	11"	23 1/2"	2840
BEH561230	30,000	72"	12"	23 1/2"	3475
BEH561130.5	30,000	78"	11"	23 1/2"	2875
BEH561230.5	30,000	78"	12"	23 1/2"	3510
BEH571130	30,000	83"	11"	23 1/2"	2895
BEH571230	30,000	83"	12"	23 1/2"	3545
BEH581130	30,000	96"	11"	23 1/2"	2803
BEH581230	30,000	96"	12"	23 1/2"	3595
BEH561140	40,000	72"	11"	23 1/2"	2890
BEH561240	40,000	72"	12"	23 1/2"	3525
BEH561140.5	40,000	78"	11"	23 1/2"	2925
BEH561240.5	40,000	78"	12"	23 1/2"	3560
BEH571140	40,000	83"	11"	23 1/2"	2945
BEH571240	40,000	83"	12"	23 1/2"	3595
BEH581140	40,000	96"	11"	23 1/2"	2853
BEH581240	40,000	96"	12"	23 1/2"	3645
BEH561150	50,000	72"	11"	23 1/2"	2940
BEH561250	50,000	72"	12"	23 1/2"	3575
BEH561150.5	50,000	78"	11"	23 1/2"	2975
BEH561250.5	50,000	78"	12"	23 1/2"	3610
BEH571150	50,000	83"	11"	23 1/2"	2995
BEH571250	50,000	83"	12"	23 1/2"	3645
BEH581150	50,000	96"	11"	23 1/2"	2903
BEH581250	50,000	96"	12"	23 1/2"	3695
BEH561160	60,000	72"	11"	23 1/2"	2990
BEH561260	60,000	72"	12"	23 1/2"	3625
BEH561160.5	60,000	78"	11"	23 1/2"	3025
BEH561260.5	60,000	78"	12"	23 1/2"	3660
BEH571160	60,000	83"	11"	23 1/2"	3045
BEH571260	60,000	83"	12"	23 1/2"	3695
BEH581160	60,000	96"	11"	23 1/2"	2953
BEH581260	60,000	96"	12"	23 1/2"	3745



SCOPE

This specification describes a push button control hydraulic operated adjustable recycle dock leveler, to be installed in a pit and/or affixed to loading platforms and to compensate for uneven heights between the truck bed and dock.

OPERATION

The Beacon BEH5 Hydraulic dock levelers are simple to operate with wall mounted push button control with auto and manual rest. When raising the Beacon deck, you will find the deck and lip action fully automatic. When the Beacon deck is raised the lip automatically extends, the deck and lip descend to the floor of the truck trailer when the button is released. The BEH5 Series automatically recycles when the trailer departs.

For below dock tailgate loading or unloading, turn the selector to below dock mode, when the deck is raised the lip clears the keepers and the unit descends to the bottom of the pit.

CONSTRUCTION

The capacities of the BEH5 are available from 20,000 to 60,000 lb. Structural C channel deck support beams are 100% welded to the back of the 3/8" x 6" header plate, 6 each under 6" wide models and 8 each under 7" wide models. Deck shall be 1/4" thick, lip shall be 1/2" thick on our 20 & 30,000 lb. capacities and 5/8" on our 40, 50 & 3/4" on 60,000 lb. capacities. Deck assembly and lip shall be 55,000 minimum yield steel tread plate. Casting hinges with 1-1/8" diameter rod pin (HR) 50 + 3" tubing with 5/8" wall thick with 1-5/8" pin (HR).

HYDRAULICS

2 GPM hydraulic pump. Hydraulic deck and lip with automatic return to dock. BEH5 is equipped with an in line safety valve to prevent leveler deck from free fall in case of premature trailer departure. Hydraulic lift cylinder is 2" bore x 18" stroke and lip cylinder is 2" bore x 8" stroke.

ELECTRICAL

The BEH5 series electrohydraulic unit is complete with a 2 HP totally closed non-ventilated motor to be factory tested for 460V, 3 PH. 60 HZ as specified. Unit includes a limit switch for the auto reset capability. All operations to be push button controlled from a single pre-wired NEMA 12 wall-mounted steel enclosure. All electrical hook-ups are by others.

Beacon Industries, inc.

12300 Old Tesson Rd.

St. Louis, MO 63128-2247 USA

Phone: (314) 487-7600 Fax: (314) 487-0100

www.beacontechnology.com

E-Mail: sales@beacontechnology.com

SAFETY EQUIPMENT

RAMP SIDES: The sides of the ramp shall be provided with full operating range steel safety toe guards. The Beacon lip keepers are installed for your protection while in storage for night security along with providing safe and secure cross traffic support. A safety velocity fuse prevents sudden fall while loading should the leveler become unsupported by the trailer. A maintenance strut is provided with each leveler. Two 4" x 10" x 12" molded dock bumpers shall be supplied with each dock leveler.

OPTIONAL FEATURES

- 460 v 3 phase standard (Other voltages special)
- Weather Seals.
- Lip 18" (14" projection).
- Lip 20" (16" projection).
- Emergency Stop Feature.
- Independent Lip Control.
- Cold Weather Hydraulic Oil
- Foam insulation.
- Abrasive Surface.
- Pit Curb Angle Kit.
- Yellow & Black Diagonal Stripping on Full Sides.
- Lifting Eyes & Chains
- Shallow Pit Option: 17-1/2" minimum depth

PAINT

Beacon Grey

OWNERS MANUAL

Owners Manual comes with each unit, including General Information, Pit preparation, Leveler preparation, Anchoring Instructions, Wiring Diagram, Operating Instructions, Troubleshooting, Parts Listed.

WARRANTY

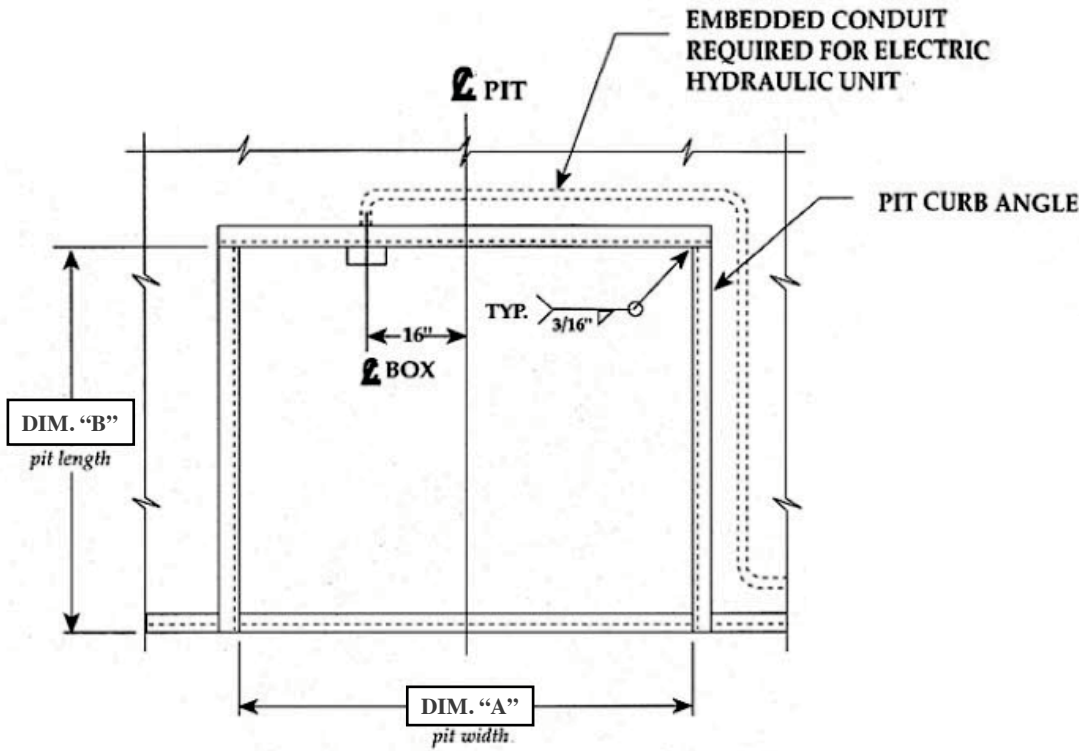
The BEH5 Series comes with a Limited Warranty - 5 years on structural members, cylinders and proximity sensors, 1 year on motor/pump and miscellaneous parts.

Special Warranty Note: Beacon will match any other company's warranty, just present to Beacon for written approval.

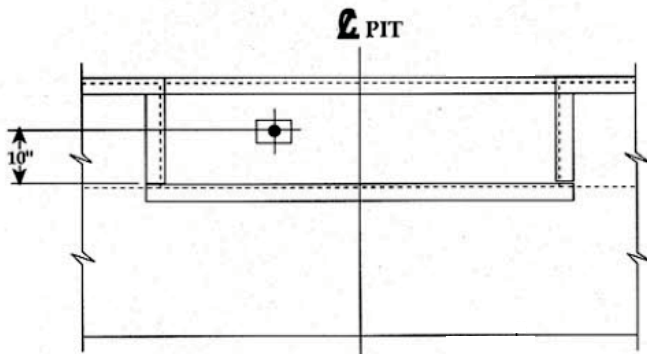
BEACON™

BEH5 Series Hydraulic Dock Leveler

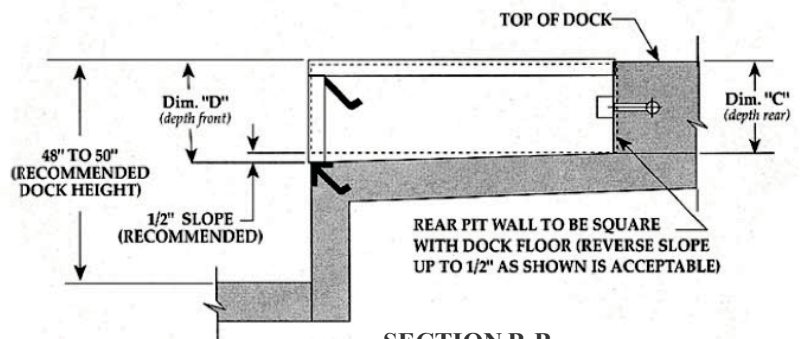
Pit Detail



PLAN
MAT'L: A-36 C. STEEL



FRONT ELEVATION
MAT'L: A-36 C. STEEL



SECTION B-B
MAT'L: A-36 C. STEEL

Not To Scale

NOTES

JOB

DRAWN: J.M.G.	SCALE: AS NOTED	DATE: 1/30/95	DRAWING NUMBER: PMI-2014 -R1
------------------	--------------------	------------------	---------------------------------

TOLERANCES:		
Inch Dimension = ± 1/16"	Decimal Dimension = ± .005	Angles = ± 1°

BEACON INDUSTRIES, INC™

12300 Old Tesson Rd., St. Louis, MO 63128, USA

Ph: 314-487-7600 USA - Call Toll Free USA 800-454-7159 - Fax: 314-487-0100

BEH5 Hydraulic Dock Leveler							Pit Sizes			
MODEL	CAP. (LBS.)	NOMINAL SIZE	WIDTH	NOMINAL LENGTH	DEPTH	LEVELER WEIGHT (LBS.)	WIDTH	ACTUAL LENGTH	DEPTH BACK	DEPTH FRONT
			"A"	"B"	"C"		"A"	"B"	"C"	"D"
BEH561120	20,000	6' W X 11' L	72"	11'	23 1/2"	2790	74	122	23 1/2	24
BEH561220	20,000	6' W X 12' L	72"	12'	23 1/2"	3425	74	134	23 1/2	24
BEH561120.5	20,000	6.5' W X 11' L	78"	11'	23 1/2"	2825	80	122	23 1/2	24
BEH561220.5	20,000	6.5' W X 12' L	78"	12'	23 1/2"	3460	80	134	23 1/2	24
BEH571120	20,000	7' W X 11' L	84"	11'	23 1/2"	2845	86	122	23 1/2	24
BEH571220	20,000	7' W X 12' L	84"	12'	23 1/2"	3496	86	134	23 1/2	24
BEH581120	20,000	8' W X 11' L	96"	11'	23 1/2"	2753	98	122	23 1/2	24
BEH581220	20,000	8' W X 12' L	96"	12'	23 1/2"	3545	98	134	23 1/2	24
BEH561130	30,000	6' W X 11' L	72"	11'	23 1/2"	2840	74	122	23 1/2	24
BEH561230	30,000	6' W X 12' L	72"	12'	23 1/2"	3475	74	134	23 1/2	24
BEH561130.5	30,000	6.5' W X 11' L	78"	11'	23 1/2"	2875	80	122	23 1/2	24
BEH561230.5	30,000	6.5' W X 12' L	78"	12'	23 1/2"	3510	80	134	23 1/2	24
BEH571130	30,000	7' W X 11' L	84"	11'	23 1/2"	2895	86	122	23 1/2	24
BEH571230	30,000	7' W X 12' L	84"	12'	23 1/2"	3545	86	134	23 1/2	24
BEH581130	30,000	8' W X 11' L	96"	11'	23 1/2"	2803	98	122	23 1/2	24
BEH581230	30,000	8' W X 12' L	96"	12'	23 1/2"	3595	98	134	23 1/2	24
BEH561140	40,000	6' W X 11' L	72"	11'	23 1/2"	2890	74	122	23 1/2	24
BEH561240	40,000	6' W X 12' L	72"	12'	23 1/2"	3525	74	134	23 1/2	24
BEH561140.5	40,000	6.5' W X 11' L	78"	11'	23 1/2"	2925	80	122	23 1/2	24
BEH561240.5	40,000	6.5' W X 12' L	78"	12'	23 1/2"	3560	80	134	23 1/2	24
BEH571140	40,000	7' W X 11' L	84"	11'	23 1/2"	2945	86	122	23 1/2	24
BEH571240	40,000	7' W X 12' L	84"	12'	23 1/2"	3595	86	134	23 1/2	24
BEH571140	40,000	8' W X 11' L	96"	11'	23 1/2"	2853	98	122	23 1/2	24
BEH581240	40,000	8' W X 12' L	96"	12'	23 1/2"	3645	98	134	23 1/2	24
BEH561150	50,000	6' W X 11' L	72"	11'	23 1/2"	2940	74	122	23 1/2	24
BEH561250	50,000	6' W X 12' L	72"	12'	23 1/2"	3575	74	134	23 1/2	24
BEH561150.5	50,000	6.5' W X 11' L	78"	11'	23 1/2"	2975	80	122	23 1/2	24
BEH561250.5	50,000	6.5' W X 12' L	78"	12'	23 1/2"	3610	80	134	23 1/2	24
BEH571150	50,000	7' W X 11' L	84"	11'	23 1/2"	2995	86	122	23 1/2	24
BEH571250	50,000	7' W X 12' L	84"	12'	23 1/2"	3645	86	134	23 1/2	24
BEH581150	50,000	8' W X 11' L	96"	11'	23 1/2"	2903	98	122	23 1/2	24
BEH581250	50,000	8' W X 12' L	96"	12'	23 1/2"	3695	98	134	23 1/2	24
BEH561160	60,000	6' W X 11' L	72"	11'	23 1/2"	2990	74	122	23 1/2	24
BEH561260	60,000	6' W X 12' L	72"	12'	23 1/2"	3625	74	134	23 1/2	24
BEH561160.5	60,000	6.5' W X 11' L	78"	11'	23 1/2"	3025	80	122	23 1/2	24
BEH561260.5	60,000	6.5' W X 12' L	78"	12'	23 1/2"	3660	80	134	23 1/2	24
BEH571160	60,000	7' W X 11' L	84"	11'	23 1/2"	3045	86	122	23 1/2	24
BEH571260	60,000	7' W X 12' L	84"	12'	23 1/2"	3695	86	134	23 1/2	24
BEH581160	60,000	8' W X 11' L	96"	11'	23 1/2"	2953	98	122	23 1/2	24
BEH581260	60,000	8' W X 12' L	96"	12'	23 1/2"	3745	98	134	23 1/2	24