

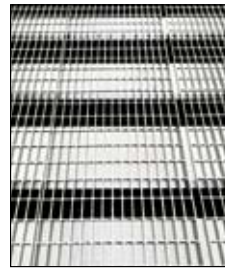
Portable Steel

YARD RAMPS



SAFETY FEATURES

- Positive Steel Traction Grating
- Safety Locking Chains
- 9" Steel Wheels
- 4" High Safety Curbs
- Manual Hand Crank Systems for Height Adjustment
- Rubber Bumpers
- 15" Overlap Lip
- YRD Series Hydraulic Edge-O-Dock



STEEL GRATING

Ground Level Trailer Access

Reduction in Material Handling Costs

Expeditious Loading & Unloading

Dock Mobility



SAFETY LOCKING CHAINS WITH 15" OVERLAP LIP

STANDARD FEATURES

- Capacities: 15,000 / 20,000 / 25,000 and 30,000 lbs.
- Lengths: 30 ft. straight ramp or 36 ft. (30 ft. ramp with 6 ft. level off)
- Widths: overall 73" with usable of 66" and 85" with usable of 78"
- 96" overall width available (call factory for details)
- Service Height Range 45" to 62"



MANUAL HAND CRANK & 9" STEEL WHEELS



TOW BAR LOOP



HAND RAILS

OPTIONS

- Pneumatic Tires and Hand Pump Hydraulic (not available on **YRD** models)
- Pneumatic Tires and DC Hydraulic Lift (not available on **YRD** models)
- Mechanical Edge of Dock in lieu of Hydraulic (on **YRD** models, 15,000 and 20,000 lbs. capacity)
- Fork Lift Pick-up Slots
- Tow Bar Loop
- Tow Bar Hitch
- Hand Rails (42" high with 21" mid-rails)



HYDRAULIC HAND PUMP



FORK LIFT PICK-UP SLOTS



27" PNEUMATIC TIRES

Portable Aluminum

YARD RAMPS

with **ALUMINUM**
or **STEEL GRATING**



SAFETY FEATURES

- 18" x 5" Mold-on-Rubber Tires
- Safety Anchor Chains
- Hand Pump Hydraulic Lift
- Rubber Shock Absorbers
- Flow Control Valve
- Tow Bar



MOLD-ON-RUBBER TIRES



HAND PUMP HYDRAULIC LIFT

OPTIONS

- Aluminum or Steel Grating
- Pneumatic Tires
(Changes Service Range to 40" to 66")
- Special Sizes Available



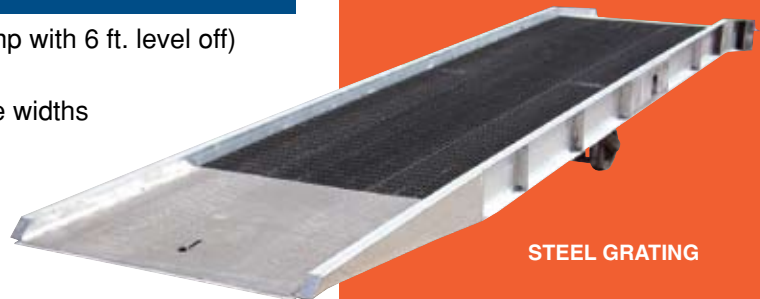
PNEUMATIC TIRES



TOW BAR HITCH
Shown with Optional Yellow Curbs

STANDARD FEATURES

- Ramp Lengths: 30 ft. straight ramp or 36 ft. (30 ft. ramp with 6 ft. level off)
- Capacities: 16,000 / 20,000 / 25,000 & 30,000 lbs.
- Overall Width: 70", 84" & 96" available with the usable widths of 63", 77" & 89"
- Constructed of Aluminum Structure with Aluminum Grating or Aluminum Structure with Steel Grating



STEEL GRATING

Distributed By: