



# Dock, Warehouse and Safety Equipment



1. STEEL DOCK BOARD (Model T)



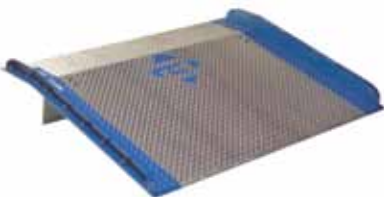
2. STEEL RED PIN DOCK BOARD (Model C)



3. STEEL DOCK BOARD (Model TNB)



4. STEEL RAIL BOARD (Model R)



5. ALUMINUM DOCK BOARD (Model AC-BC)

1. **Model T:** Two four-hole pin pockets, lifting loops, double bend design.
2. **Model C:** Dual pin locking system for difficult trailer-to-dock positioning.
3. **Model TNB:** Single bend design with lifting chains and full-length locking legs.
4. **Model R:** Heavy-duty locking rings for safe, secure positioning. Lifting loops, Box structure for strength and safety. Speedy Board option available.

5. **Model AC-BC:** Full-length structural steel bolt-on legs. Low cost solution for light, non-powered activity applications.
6. **Model SC:** All-welded steel board with fixed lock legs for low- to medium-capacity use. Notch design on leading edge of board allows the forklift driver to move, set in place, and retrieve the board without exiting the forklift gate.
7. **Model CR:** Assists in safe navigation from ground to container. Full-width stiffener, locking chains, and lifting loops.

8. **Model ATD:** All welded aluminum construction. Capacities of 10,000 and 15,000 pounds.
9. **Model SL:** Top-of-dock mounted, vertically stored board with dual spring lift assist. Recommended for loading applications involving hand trucks/dollies and pallet jacks.

10. **Model A-B:** Low-cost solution for light, non-powered applications.



6. STEEL DOCK BOARD (Model SC) WITH SPEEDY BOARD® OPTION



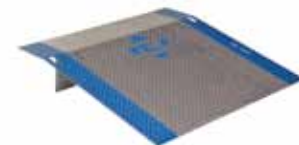
7. CONTAINER RAMP (Model CR)



8. ALUMINUM DOCK BOARD (Model ATD)



9. ALUMINUM SPRING LOADED PLATE (Model SL) Patent No. D633,684



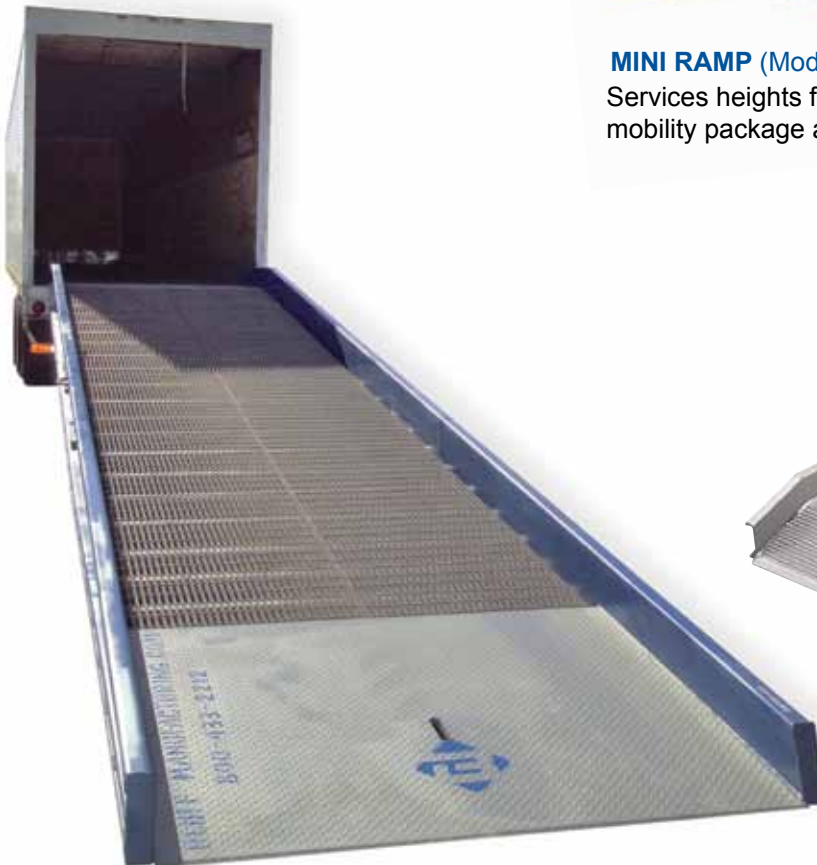
10. ALUMINUM DOCK PLATE (Model A-B)



**STEEL PLATFORM (Model SP)**  
A fast, economical way to expand your dock area and increase freight handling capabilities.



**MINI RAMP (Model MR)**  
Services heights from 16" to 33". Optional mobility package available (pictured above).



**STEEL YARD RAMP (Model YRA)**  
All-welded steel construction with capacities from 16,000 lbs. to 60,000 lbs. Wide range of capacities and sizes available. Double-action hydraulic pump. Solid rubber tires standard, pneumatic tires optional. Available without undercarriage for permanent placement.

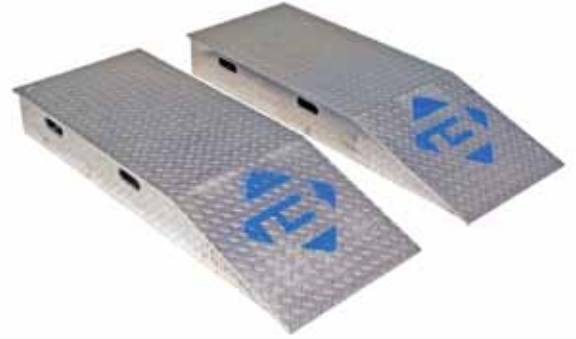


**WALK RAMP (Model WR)**  
Strong, lightweight aluminum construction makes ramps easily portable and convenient. For foot traffic only. Available in Hook Model or Apron Model (pictured above).



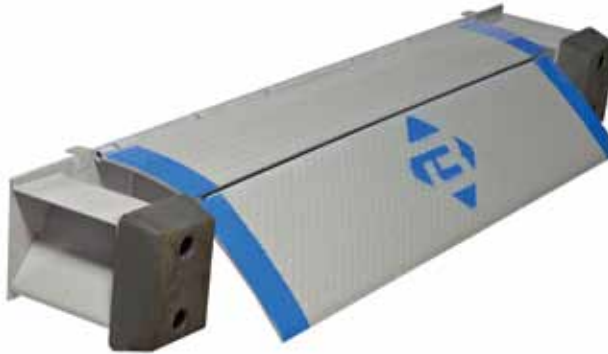
### STEEL WHEEL RISERS (Model SWR)

Position trailers properly above dock for more efficient loading. Lengths to accommodate single, dual or tandem axle trailers. Widths of 18" and 24". Custom sizes available. Tabs for anchoring



### ALUMINUM WHEEL RISERS (Model AWR)

Position trailers properly above dock for more efficient loading. Lengths to accommodate single, dual or tandem axle trailers. Widths of 18" and 24". Custom sizes available. Hand holds for easy moving



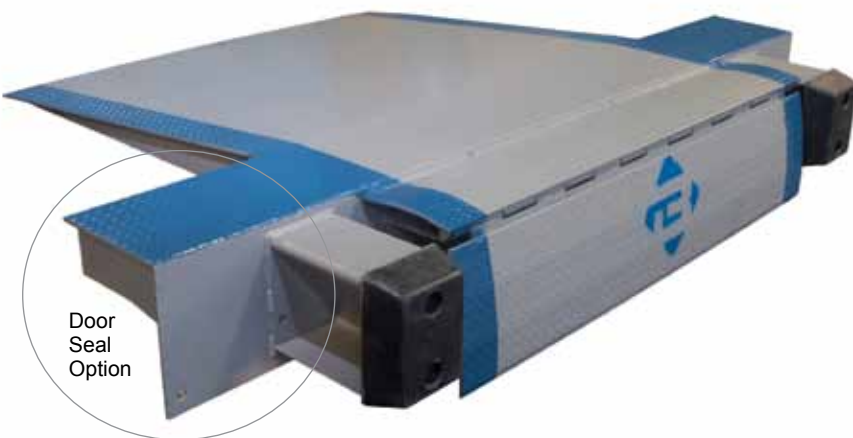
### EDGE-OF-DOCK LEVELER (Model EP)

Automatically returns to stored position when truck leaves. Self-storing handle. Bumper and blocks included. Capacities from 20,000 to 25,000 lbs. Refrigerated lip and hydraulic operating system are optional.

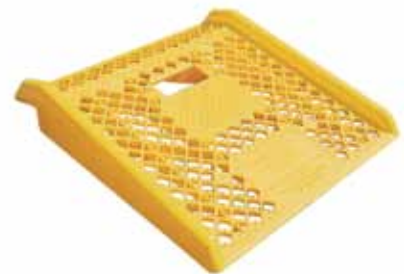


### LO-DOCK LEVELER (Model LD)

Raises Edge-of-Dock Levelers to proper working height. Easily installed on any concrete dock without welding or modifications. Working range of 5" up or 5" down. Refrigerated lip and hydraulic operating system are optional.



### LO-DOCK LEVELER WITH DOOR SEAL OPTION (Model LD)



### CURB RAMP (Model CR)

Provide a safe and ergonomically correct method to move heavy loads over curbs or up steps with ease. Lightweight ramp has two handles with rounded edges for easy pickup, carrying and handling.

## CRASH GUARD™ SAFETY BARRIERS

Improve plant and warehouse safety by reducing the costs associated with employee injury, machinery down-time, insurance claims and building repairs due to accidental collisions.



**SAFETY RAIL** (Models SRT)



**MACHINE GUARD** (Model MG)



**MODULAR PROTECTIVE BARRIER** (Model MPB)



**POST PROTECTORS** (Model PO)



**PIPE GUARD** (Model PG)



**DOOR TRACK GUARD** (Model DG)

**BOLLARD** (Model SRB)



**RACK GUARD** (Model RG)