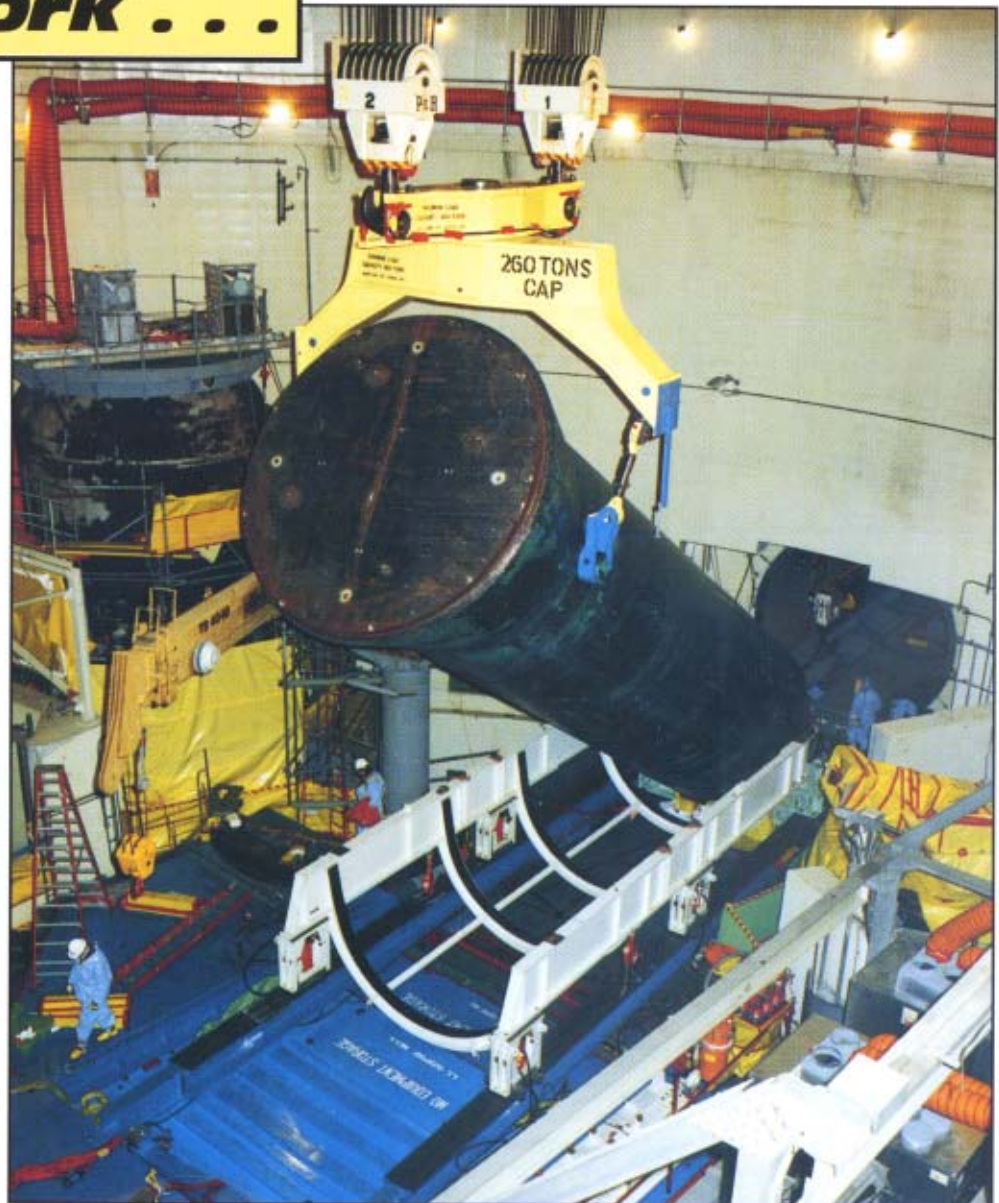


# Power Generation



 **HILMAN  
ROLLERS**

***At Work . . .***





# HILMAN ROLLERS

## At Work . . .

### . . . Power Generation

Power equipment is heavy. It's expensive, intricate, even dangerous. And it must be maintained. On a schedule. When massive pieces must be switched, decommissioned, or installed in tight time frames, Hilman Rollers are a product contractors and maintenance crews can rely on.

Shut downs for decommissioning, outage and general equipment maintenance are planned in great detail. The equipment used by the crews must be top quality and reliable. Through the years, large contractors and facility maintenance crews alike have found Hilman Rollers to be the ideal tool for the movement of their heavy equipment ranging from 1000 lb. switchgear to reactors weighing thousands of tons. The Hilman Rollers' smooth chain action, low height, low friction and virtually unlimited modification possibilities suit these intricate heavy moves perfectly. Hilman Rollers can easily be built permanently into rigging equipment or used for one time temporary moves.

With over 40 years of experience, Hilman is a company with a real working product upon which today's fossil fuel, hydro, and nuclear power plants can rely. Following are brief photographic overviews of the capabilities of Hilman Rollers and Hilman Rolling Systems at work in power related heavy moves.

### TRANSFORMER PLACED



350 ton Westinghouse transformer is moved from the lo-boy to a rail car in preparation for installation at Central Hudson Gas & Electric. Four 300 ton Super Heavy Duty Hilman Rollers are used in the final installation.



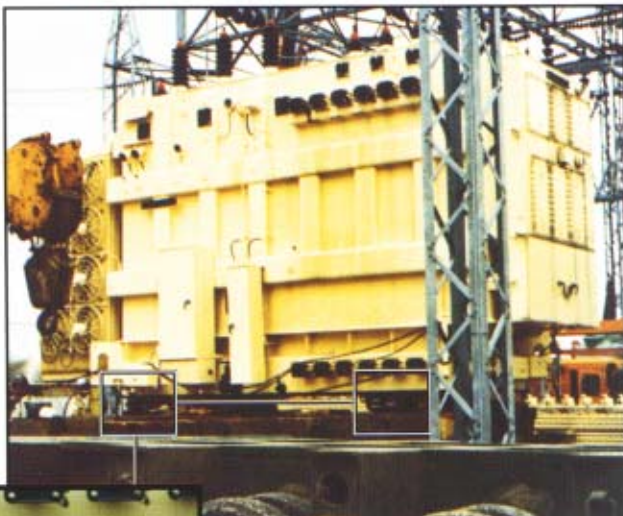
### TRANSFORMERS INSTALLED



150 ton capacity modified Hilman Rollers were used to move several transformers for the Sylmar Department of Water and Power. The rollers, topped with preload pads and bolted to the transformer bases, were modified with an Accu-Roll guidance system to ride in a channel track.



### TRANSFORMER MOVED



Huge 140 ton transformer is moved on Hilman Rollers. A single 1 1/2 ton come-along is all the motive power required.



## TIGHT CLEARANCE



The low height and high capacity of Hilman Rollers help save time and money during the shutdown at Indian Point 3. Four huge 14 foot diameter steam generators were removed intact through a containment hatch with only 1/4 inch clearance.

## REACTOR SHIFTED



An 800 ton reactor vessel is shifted to the storage area on four 300 ton Super Heavy Duty Hilman Rollers riding on steel plate. A cradle was created to hold the odd-shaped reactor.



## PRECARIOUS MOVE



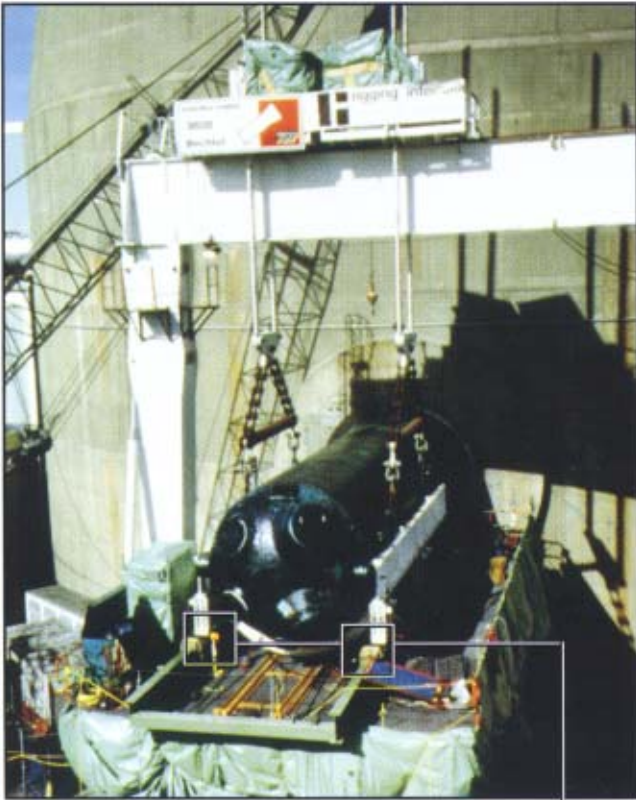
High atop a New York City skyscraper, a series of 17 ton transformers are rolled into place on four Hilman Rollers, modified with an Accu-Roll guidance system. Once hoisted to an I-beam track, the transformers were quickly rolled to their final position.

## GENERATORS REPLACED



A Semi-gantry system, which rolled on modified 100 ton capacity Hilman Rollers, was designed and built for this large scale removal and replacement project. Four 480 ton steam generators in total were replaced using the special rigging equipment. One of the rollers built into the semi gantry is seen in the foreground.

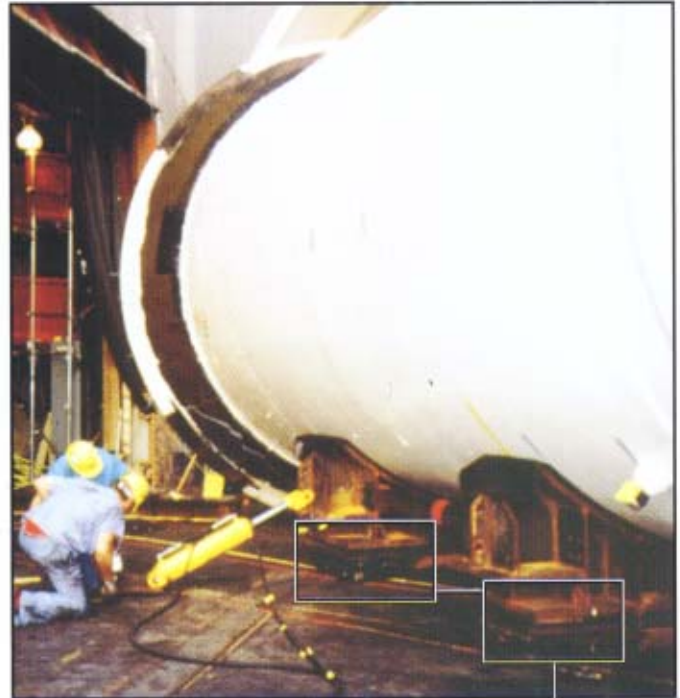
## RECORD BREAKER



Three 233 ton steam generators were removed and replaced at North Anna-1, during a replacement project that broke USA and world outage records. Hilman Rollers, modified with Accu-Roll guidance systems, were built into the transport cradles that enabled the generators to be removed through the equipment hatch with only 1" radial clearance.



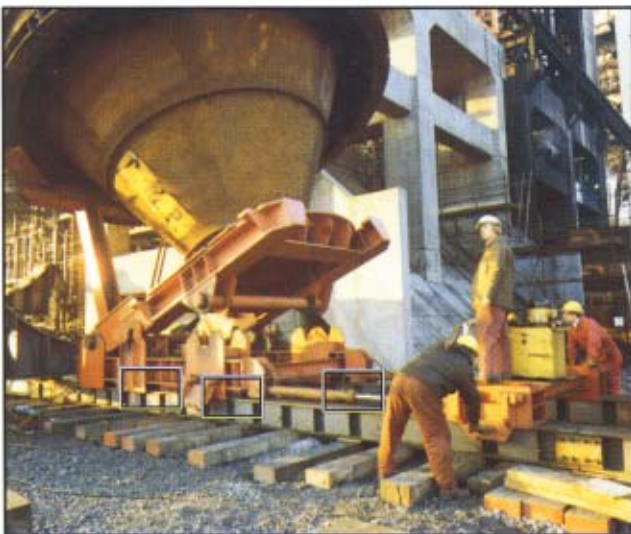
## "TURNTABLE" TAPERED ROLLERS



Lack of space at Connecticut Millstone Unit 2 necessitated that a unique system be designed to remove two generators and install two new ones. Four 100 ton capacity Hilman Rollers with tapered chains were attached to saddles that held each 350 ton generator. With a ram as the motive force, a "turntable" effect was created.



## VESSEL LIFTED



350 ton vessel, located at a power plant in the U.K., is lifted into place by a dove-tailing device. As the vessel is gradually lifted, its weight is transferred to the four Hilman Rollers tracking on a steel beam.

**W**hether it's a transformer, turbine, condenser or steam generator vessel, there's a Hilman Roller size that will move the load easily, safely and with maximum economy.

Hilman Rollers are indeed POWER-FUL at work in Power Generation applications. But that's not the only area! Be sure to look for other titles in the "Hilman Rollers At Work" Series:

- Oil & Gas Exploration, Marine and Shipbuilding
- Bridge Construction
- Pipe and Tunneling
- Heavy Construction & Rigging
- Industrial Machinery
- Doors
- Research Equipment
- Manufactured Home Production and Roll-On
- OEM, Production & Automation, Quick Die Changing

**HILMAN  
ROLLERS**

www.hilmanrollers.com

12 Timber Lane • Marlboro, NJ 07746

Tel: 732.462.6277 Fax: 732.462.6355

e-mail: sales@hilmanrollers.com

AW-PG/01