



# **WORKPLACE SHELVING STORAGE RACKS SHOP FURNITURE & SPECIALTY STORAGE**

*Look to Tri-Boro for:*

*Outstanding Quality  
Affordable Pricing  
& Ontime Delivery*

**Online PDF Catalog Pages**

**Tri-Boro Shelving and Partition Corp.**  
300 Dominion Drive • Farmville, VA 23901  
Toll Free: 1-800-633-3070  
Phone: 434-315-5600  
Fax: 434-315-0139

**Tri-Boro Shelving & Partition Corporation**  
296 Wythe Avenue • Brooklyn, N.Y. 11211  
Phone: 718-782-8527  
Fax: 718-963-0457

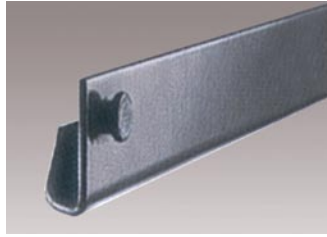
**[www.triboroshelving.com](http://www.triboroshelving.com)**

**e-mail: [info@triboroshelving.com](mailto:info@triboroshelving.com)**

# Tri-Boro Rivet-Rak™ Components & Accessories

## SINGLE RIVET LIGHT BEAM

Model Number	Wt.
RBL12	0.6
RBL15	0.7
RBL16	1.2
RBL18	0.9
RBL24	1.3
RBL30	1.6
RBL36	1.9
RBL42	2.2
RBL48	2.4



-14 gauge 1-1/4" x 1-1/8"

## DOUBLE RIVET CHANNEL BEAM

Model Number	Wt.
RBC48	5.6
RBC60	7.0
RBC69	8.1
RBC72	8.4
RBC84	9.8
RBC96	11.2



-14 gauge 1-1/8" x 2-3/4"

## DOUBLE RIVET ANGLE BEAM

Model Number	Wt.
RBA12	1.0
RBA15	1.2
RBA16	1.5
RBA18	1.5
RBA24	2.0
RBA30	2.5
RBA36	2.9
RBA42	3.4
RBA48	3.9
RBA60	4.9
RBA69	5.6
RBA72	5.9
RBA84	6.8
RBA96	7.8



-14 gauge 1-1/8" x 2-3/4"

## TIEBEAMS

Model Number	Wt.	Model Number	Wt.
RTB12	1.4	RTB30	2.7
RTB15	1.6	RTB36	3.2
RTB16	1.8	RTB42	3.6
RTB18	1.8	RTB48	4.1
RTB24	2.3		

-14 gauge 1-1/8" x 2-1/2"



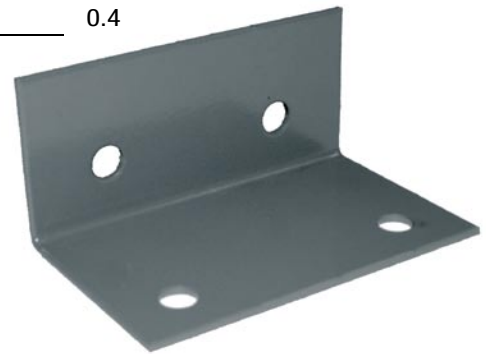
## RIVET TIE PLATE

**Model Number** RTP  
Lock posts together to join two or more racks side by side.



## RIVET FOOT PLATE

Model Number	Wt.
FPRP	0.4



## RIVET RACK AISLE BRACES

Made of 13 gauge channel formed steel with one additional return flange on top for added strength. End tabs are flanged at 90° angles with holes punched on 1-1/2" centers.

Model Number	Size	Wt.
RRAB30	30"	4.6
RRAB36	36"	5.4
RRAB42	42"	6.3
RRAB48	48"	7.1

## RIVET SPLICE

1" x 1" x 5-1/2"

Model Number	Wt.
RSP	0.45



# Tri-Boro Rivet-Rak™ Components & Accessories

## RIVET POST

13 gauge cold-rolled steel 1-1/2" x 1-1/2" on 1-1/2" centers. Heavy duty is 1-7/8" x 1-7/8" on 1-1/2" centers.

Rivet Angle		Heavy Rivet Angle	
Model Number	Wt.	Model Number	Wt.
RP36	1.9	RPH72	4.8
RP48	2.6	RPH84	5.6
RP60	3.2	RPH96	6.4
RP72	3.8	RPH108	7.0
RP84	4.5	RPH120	8.0
RP96	5.1	RPH144	9.6
RP108	5.8	RPH168	11.2
RP120	6.4	RPH192	12.8

\*3'-10' High Available

\*6'-16' High Available

## RIVET "T" POST

A 3" x 1-1/2" angle made from 14 gauge cold rolled steel. Used as a common post between rivet units. Punched for shelf adjustment on 1-1/2" centers

Model Number	Description	Wt.
RTP72	Rivet "T" Post 72"	8.0
RTP84	Rivet "T" Post 84"	9.5
RTP96	Rivet "T" Post 96"	11.0
RTP108	Rivet "T" Post 108"	12.0
RTP120	Rivet "T" Post 120"	12.5
RTP144	Rivet "T" Post 144"	14.0
RTP168	Rivet "T" Post 168"	15.5
RTP192	Rivet "T" Post 192"	17.0

\*6'-16' High Available



**Rivet Angle Post**  
1-1/2" x 1-1/2" -13 gauge



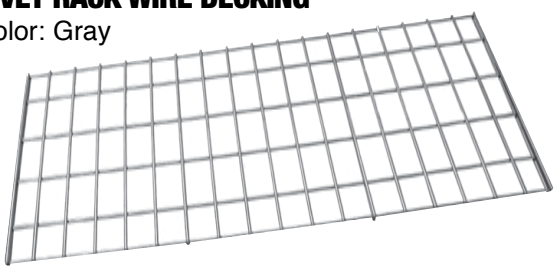
**Heavy Rivet Angle Post**  
1-7/8" x 1-7/8" -13 gauge



**Rivet "T" Post**  
3" x 1-1/2" -14 gauge

## RIVET RACK WIRE DECKING

Color: Gray



### Popular Sizes:

Model Number	D x W
WD1836	18" x 36"
WD1848	18" x 48"
WD2448	24" x 48"
WD2472	18" x 72"
WD3069	30" x 69"
WD3636	36" x 36"
WD3648	36" x 48"
WD3672	36" x 72"
WD4848	48" x 48"
WD4872	48" x 72"

Wire decking is manufactured with 4 - Ga. wire 2" x 4" mesh. It meets fire code standards and features easy drop in installation, better inventory visibility. Call for prices for popular sizes. Additional sizes available upon request. Call for prices.

## PARTICLE-BOARD SHELVES

Our particle board decking is 5/8" thick and pre-cut to size for use with Tri-Boro rivet rack. For general purpose and record storage applications. See price list for all sizes.



[www.triboroshelving.com](http://www.triboroshelving.com)

# Tri-Boro Specialty Rivet-Rak

**Specialty Rivet-Rak Units are preconfigured, easy to assemble, strong and durable.**

These units are constructed with boltless rivet-rak components. Units are designed for a wide variety of applications. Horizontal surfaces are generally created with particle board. Because they are built from Tri-Boro Rivet-Rak components these units require no sway bracing allowing easy access. All shelves are adjustable on 1-1/2" centers and are simple to assemble and flexible.

## Used In Many Applications:

**Industrial • Office • Commercial  
Record Storage • Warehouse • Work Stations**

Select from our standard units and sizes, or have Tri-Boro custom design units to meet your specific needs. Particle board is the standard top surface for these specialty racks, however they can be outfitted with other surfaces. Contact us for further information.



### WORK CENTER

Model Number	Size D x W x H
WC309836	30" x 98" x 36"



### OFFICE UNIT

Model Number	Size D x W x H
OF183684	18" x 36" x 84"



### RECORD STORAGE

Model Number	Size D x W x H
RS164284	16" x 42" x 84"



### TIRE RACK

Specialized sloped shelves hold tires firmly on rack. Tire rack can be bolted to wall for additional stability. Row supports available for back to back rows. See price list for wall and row supports.

Model Number	Size D x W x H
TR126084	12" x 60" x 84"



### PACKAGING BENCH

Model Number	Size D x W x H
PB367236	36" x 72" x 36"



### RECORD STORAGE

Model Number	Size D x W x H
RS326984	32" x 69" x 84"