

## E'wms®: Egemin Warehouse Management System

Egemin's Warehouse Management System (E'wms®) delivers efficient and lean material distribution operation systems through unrivaled personnel, inventory and equipment management. Experience 99.9% inventory accuracy and up to 35% productivity improvement from your automation environment.

### What is E'wms®?

The Egemin Warehouse Management System (E'wms®) links your logistic environment and the equipment available in your warehouse. It consists of two main modules and is specifically designed to work with all forms of automation, as well as forklift truck fleets.

### E'wms® core functionality & benefits

- Inbound processing
- Outbound processing
- Distributed order management
- Inventory management
- Work orders
- Goods-to-man / Man-to-goods
- Maximize labor and equipment efficiencies
- Designed for fully automatic & manual warehousing
- Modular software for efficient project configuration
- Modules are integrated into one base package
- Designed to integrate with all common ERP software
- Fully compatible with multi-warehousing

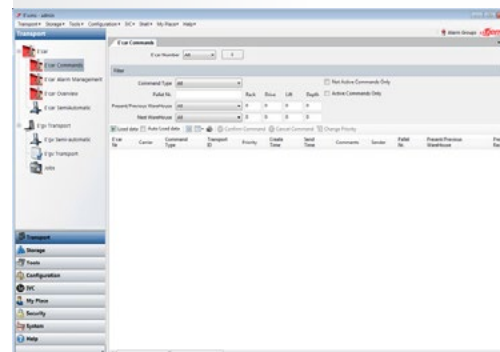
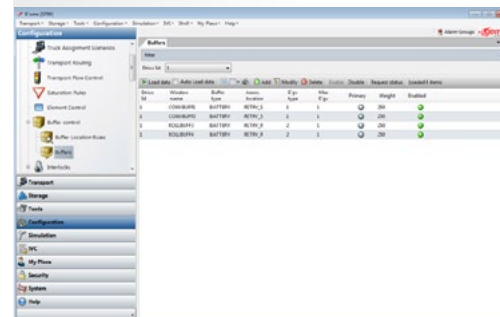
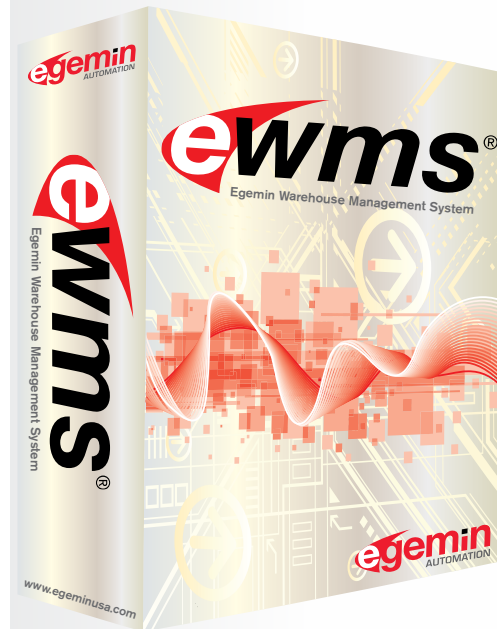
### Inventory Management

The inventory management module stores product according to the carrier and compartment number, product attributes (owner, lot, quality, abc qualification), storage zone, etc. Cross-docking operations move products of a specific customer from reception directly to dispatch. E'wms® allocates warehouse inventory to order lines based on intelligent allocation algorithms: least remaining stock per carrier, FIFO, FEFO, capacity distribution & optimization, etc. Orders are automatically reallocated to another carrier in case of unexpected product shortages.

### Order Management

The order management module assigns orders to resources based on priority, due-out time and order reception time. E'wms® supports order picking concepts such as single order picking, batch picking and cluster picking. Furthermore, optimization algorithms are implemented for these concepts to fine-tune the product flows.

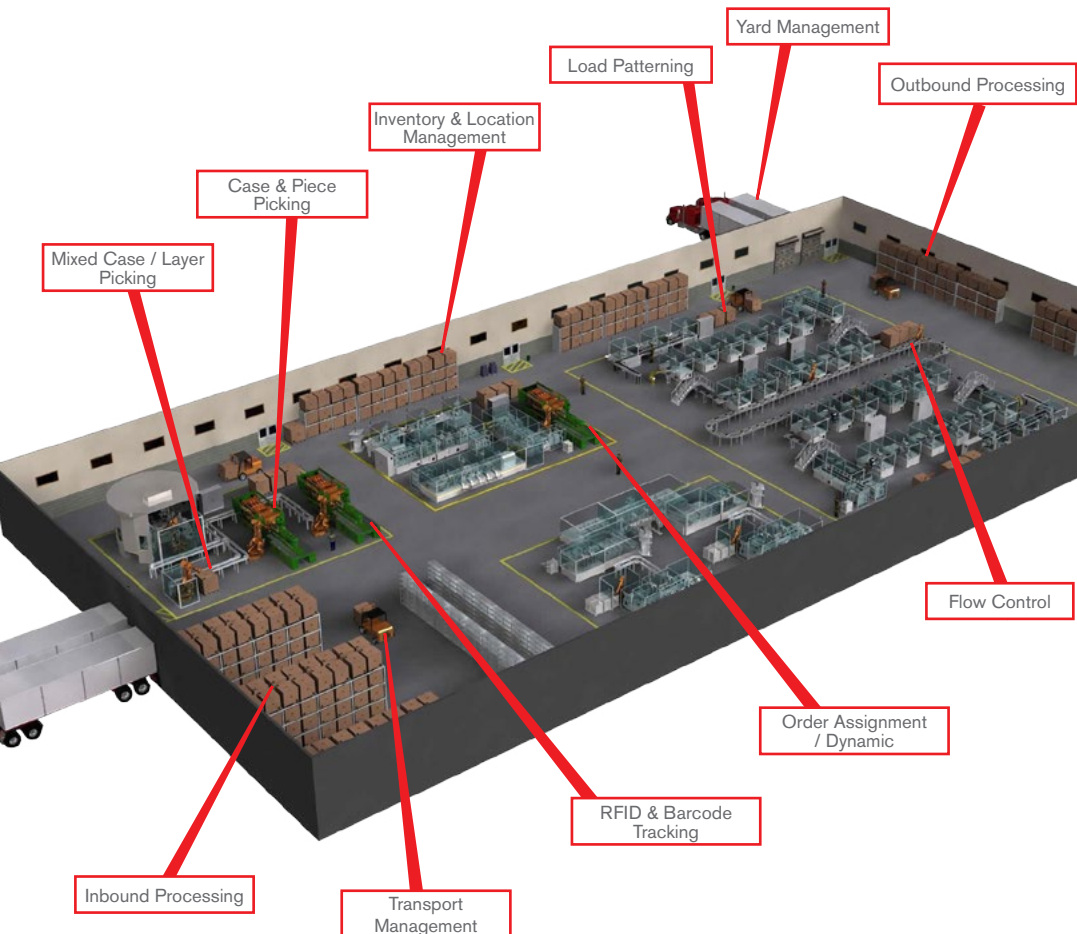
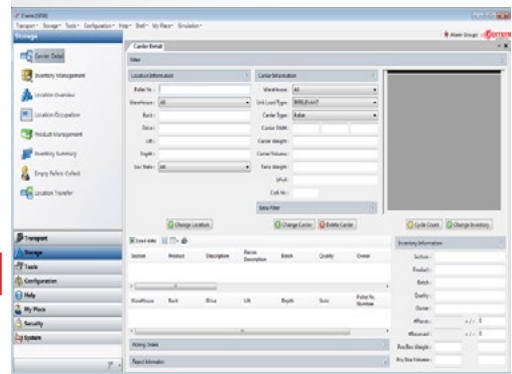
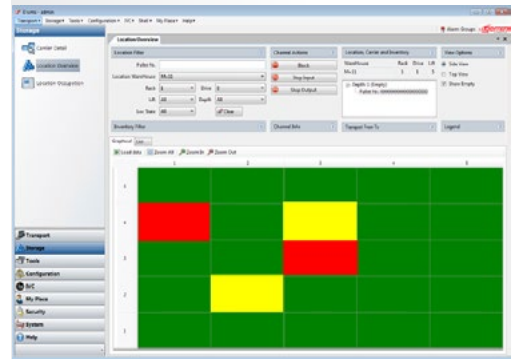
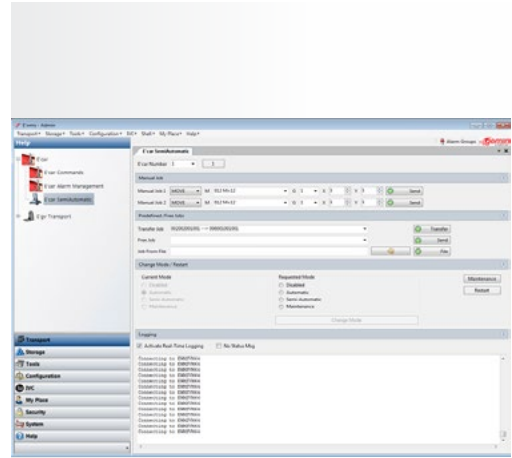
#### E'WMS® LEAFLET



## E'wms® add-on modules

In addition to E'wms's core modules that come with every E'wms system, add-on modules offer advanced functionality and further streamline your facility's material handling. Add-on modules include:

- Tracking & Tracing module
- Visualization
- Satellite storage
- Statistical & KPI management reporting
- AGV systems
- Advanced intake goods reception
- Location & stock optimization
- Equipment alarm management
- AS/RS systems
- Automatic trailer loading & unloading
- Trailer patterning
- Pick-to-light systems
- Put-to-light systems
- Yard management
- Warehouse control system
- Sortation system



**Egemin Automation Inc.**  
 11818 James Street | Holland, MI 49424  
 T 616 393 0101 | F 616 393 0331  
 sales@egeminusa.com | www.egeminusa.com

**International Headquarters**  
 Baarbeek 1 | BE-2070 Zwijndrecht  
 T +32 3 641 12 12 | F +32 3 641 13 13  
 info@egemin.com | www.egemin-automation.com

Follow us on:



Copyright © 2016 Egemin Automation Inc.  
 Ewms/Leaf/V2.0

All rights and changes reserved. The contents of this document may change without prior notice.