


# JDN *mini* AIR HOISTS

Small in Size, High in Performance.  
From 275 Lbs. to 2200 Lbs. Capacity,  
Air Pressure 85 PSI (6 Bar)

The JDN "Economy Line" **mini** completes our PROFI series of hoists, proven in heavy-duty industrial applications. The **mini** brings that famous JDN quality to the light duty sector.

Explosion Classification:  II 3 GD IIA T4(X)

## FEATURES

- ⇒ New patented wear-resistant breaking system
- ⇒ Rugged lightweight aluminum housing
- ⇒ Precise variable lifting and lowering speed
- ⇒ Few components mean easy operation and low maintenance
- ⇒ Very low headroom
- ⇒ Easy to handle because of its low weight
- ⇒ Complete turnkey solution for 1 ton and below
- ⇒ Chain Container Standard



mini 125



mini 1000  
in plain trolley

## TECHNICAL DATA

Type		mini 125	mini 250	mini 500	mini 1000
Capacity	lbs	275	550	1100	2200
	kg	125	250	500	1000
Number of chain strands		1	1	1	1
Motor output	kW	0.4	0.4	1	1
Lifting speed without load	ft/min	130	65	65	33
	m/min	40	20	20	10
Lifting speed at full load	ft/min	49.5	26	33	16
	m/min	15	8	10	5
Lowering speed at full load	ft/min	99	52	59	33
	m/min	30	16	18	10
Air consumption at full load	cfm	17.5	17.5	42.5	42.5
	m <sup>3</sup> /min	0.5	0.5	1.2	1.2
Air connection	inch.	G 3/8"	G 3/8"	G 1/2"	G 1/2"
Weight with 10ft / 3m lift	lbs	21	23.1	46.2	50.6
	kg	9.5	10.5	21	23
Chain dimension	mm	4 x 12	4 x 12	7 x 21	7 x 21
Weight of chain	lbs/ft	0.23	0.23	0.67	0.67
	kg/m	0.35	0.35	1.1	1.1
Height of lifts	ft	10 / 16 / 26			
	m	3.0 / 5.0 / 8.0			
Length of control at standard lift	ft	6.5 / 13 / 20			
	m	2 / 4 / 6			
Sound level at full load <sup>2</sup> – lifting	dB(A)	79	79	77	77
Sound level at full load <sup>2</sup> – lowering	dB(A)	80	80	83	83

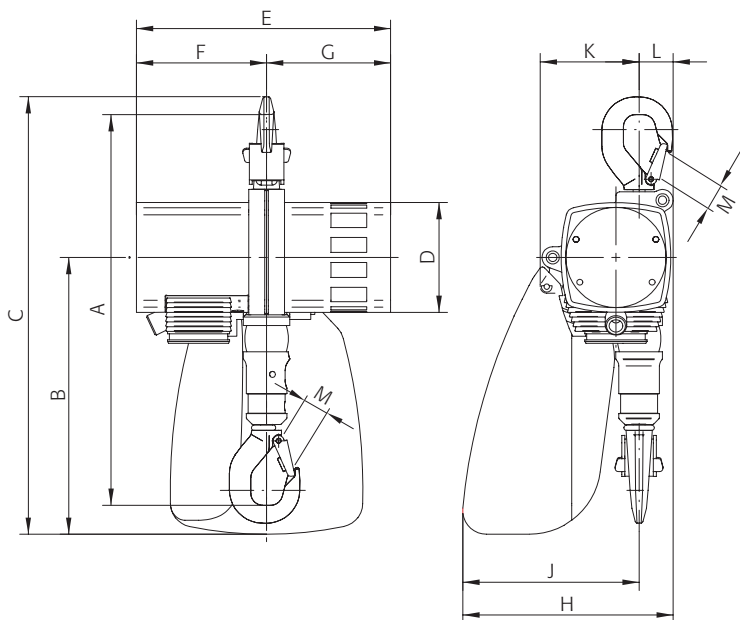
<sup>1</sup> Lifting speed at 2m length of control. Longer control hoses decrease the lifting speeds.

<sup>2</sup> Measured at 1m distance acc. to DIN 45635 part 20



## DIMENSIONS

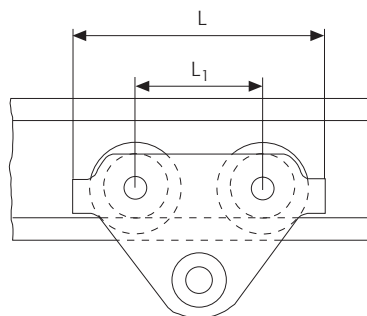
Type		mini 125	mini 250	mini 500	mini 1000
A	inch. mm	12.9 328	12.9 328	18.0 458	18.0 458
B	inch. mm	9.1 232	9.1 232	12.4 316	12.4 316
C	inch. mm	14.4 367	14.4 367	19.9 505	19.9 505
D	inch. mm	3.6 92	3.6 92	4.8 122	4.8 122
E	inch. mm	8.4 213	8.4 213	11.5 292	11.5 292
F	inch. mm	4.3 109	4.3 109	5.8 148	5.8 148
G	inch. mm	4.1 104	4.1 104	5.6 144	5.6 144
H	inch. mm	7 177	7 177	9.2 234	9.2 234
J	inch. mm	5.8 148	5.8 148	7.6 194	7.6 194
K	inch. mm	3.3 83	3.3 83	4.7 119	4.7 119
L	inch. mm	1.1 29	1.1 29	1.6 40	1.6 40
M	inch. mm	0.7 19	0.7 19	1.1 28	1.1 28



## PLAIN TROLLEYS FOR JDN AIR HOISTS *mini*

### TECHNICAL DATA

Type		LN 500	LN 1000
For use with:		mini 125 mini 250	mini 500 mini 1000
Beam flange width b	inch. mm	2 - 8 50 - 220	2 - 8 58 - 220
max. flange thickness t	inch. mm	1.3 34	1.2 30
min. curve radius	inch. m	35.4 0.9	39.4 1.0
Weight	lbs kg	17 7.7	21 10.5



### DIMENSIONS

Type		LN 500	LN 1000
A	inch. mm	3.1 79.5	3.1 79
D	inch. mm	0.7 17	0.7 17
D <sub>1</sub>	inch. mm	1 25	1.2 30
D <sub>2</sub>	inch. mm	1.2 30	1.4 35
H <sub>1</sub>	inch. mm	1.2 30	1 25
I	inch. mm	2.7 67.5	3.2 81.5
L	inch. mm	10.2 260	10.2 260
L <sub>1</sub>	inch. mm	5.1 130	5.1 130
O	inch. mm	2.2 55	2.7 68
T	inch. mm	5.7 144	5.9 151

