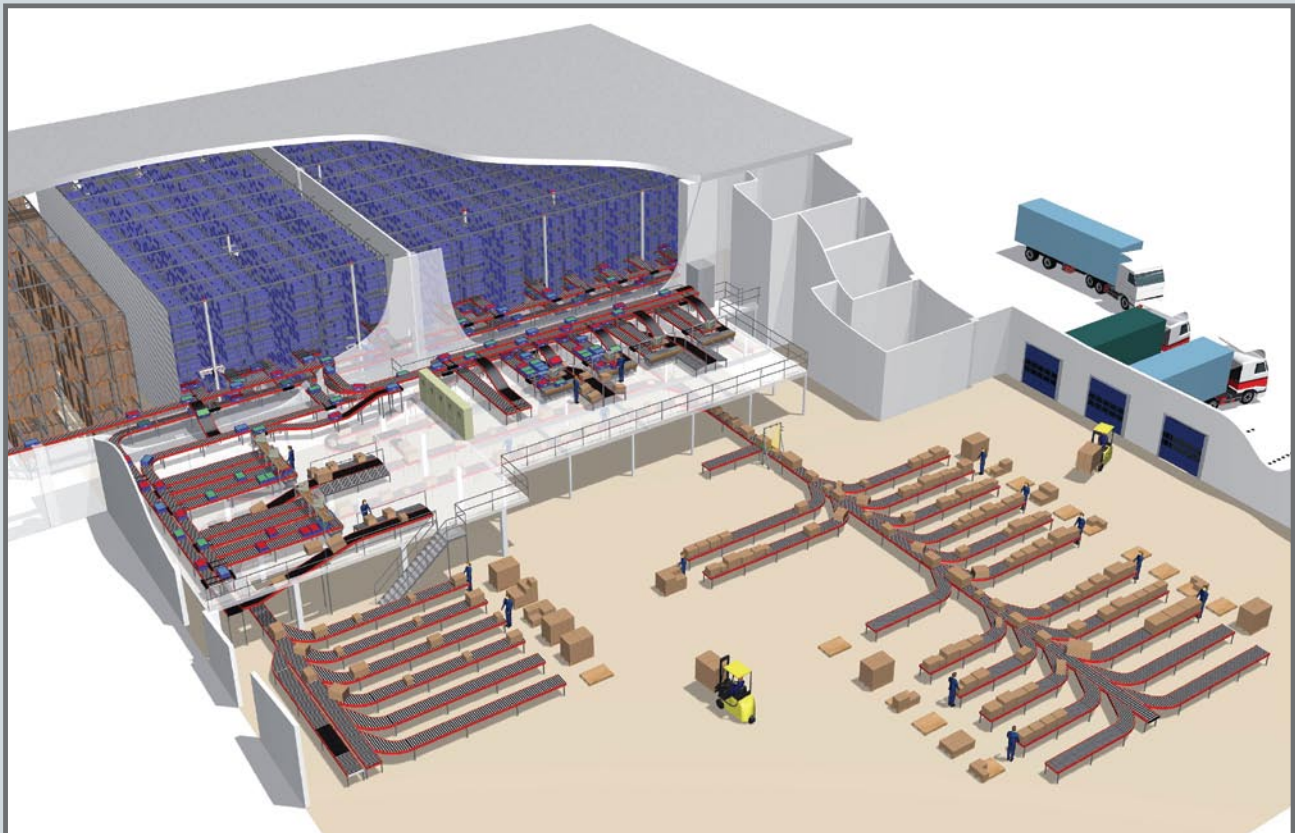


# Supply Chain Solutions

Maximizing efficiency in DC operations through operational analysis, assessment, world-class design and implementation.



**Analyze. Concept. Design.**



*Achieving Logistics Excellence™*

# Supply Chain Solutions

## Maximizing Efficiency in DC Operations

Are you trying to reduce labor, improve order accuracy, save energy, or optimize space to maximize your DC efficiency? We can help you achieve your operational objectives. Our thorough approach includes data analysis, operational assessment, workflow analysis, and industry best practices to ensure that the team-developed solution will fulfill your unique requirements.

### 1. Design Studies

Whether you are considering a retrofit, consolidation, expansion or new design of a DC, the Supply Chain Solutions Team will work with you to analyze, concept and design the correct solution.

#### Data Analysis

- Request for information
- Site visit and interviews
- Determine growth projections
- Design requirements

#### Concept Development

- Sizing by functional area
- Slotting
- Operational considerations
- Ergonomic design considerations

#### Concept Evaluation

- Material flow analysis
- Productivity analysis
- Benefits by concept
- Financial return on investment

#### Final Design

- Team recommendations
- Firm pricing
- Management presentation
- Final report

# Efficiency Optimization



visit [www.tgw-ermanco.com](http://www.tgw-ermanco.com)

## 2. Operational Assessments

Are you out of space or wondering how to lower your operating costs? The Supply Chain Solutions Team will assess your current operation to develop recommendations on how you can become more efficient.

### **Operational**

Identifies opportunities for improvement and the steps needed to get there.

### **Productivity**

Assesses what needs to change to optimize productivity from your operational team.

### **Throughput**

Analyzes equipment and processes to determine how to achieve throughput requirements.

## 3. Implementation Support

As your solution is implemented under the guidance of the TGW-ERMANCO Project Team, the Supply Chain Solutions Team will provide assistance to ensure a successful start-up.

### **System Implementation**

We work closely with our team of engineers and project managers to ensure concepts are implemented as planned.

### **Operational Training**

We will assist with on-site training of managers in using and managing your new system.

## 4. Satisfaction Assurance

Our goal is to provide an outstanding customer experience.

### **Solution Review**

To be certain you are satisfied, we will perform a review of the implemented solution to measure success. This will occur during the first year of operation.

### **On-Going Support**

TGW-ERMANCO offers you continuing support with a large selection of available services.



# System Integration

# Performance



Achieving Logistics Excellence™



Achieving Logistics Excellence™

**DC Design and Operational Assessment**

- DC design
- Operational analysis
- Operational audits
- Feasibility studies
- Productivity improvement
- Workflow analysis
- Simulation

**System Concepting**

- Concept analysis and evaluation
- Technology selection
- Budget development
- ROI analysis

**System Implementation**

- Project management
- System integration
- Control and WCS design
- Installation and field wiring
- Testing
- Operation start-up support

**Operational and Maintenance Training**

- Classroom training
- Hands-on training
- Preventive maintenance programs
- Manuals
- Site support

**Lifetime Services**

- Preventive maintenance
- Emergency response 24/7
- Replacement parts
- System audits
- System enhancement

**Successful Material Handling Solution**

- Guaranteed performance
- Two-year equipment warranty
- System operation review
- Outstanding customer experience

TGW-ERMANCO INC.  
 6870 Grand Haven Road  
 Spring Lake, MI 49456-9652 USA  
 231-798-4547  
 info@tgw-ermanco.com • www.tgw-ermanco.com

A member of  
**TGW LOGISTICS GROUP**  
 worldwide integrated solutions network



FM9951-1208

©2006 TGW-ERMANCO INC.