

## W9 SERIES ROTO-FIX SPRING CUP CASTERS

### STANDARD FEATURES

- Recessed mounting design
- Low profile
- No tools needed for installation
- Superior load capacity

RoTo-Fix Casters have a non-tipping low profile design allowing for easy installation. Simply drill a 3<sup>3/8</sup>" hole that has a 3/4" clearance and push the spring cup caster into the hole until it is flush with the mounting flange. Applications: Wooden display counters and cases, furniture, TV stands, kitchen counters and islands.



Upside down view showing the swiveling wheel mechanism



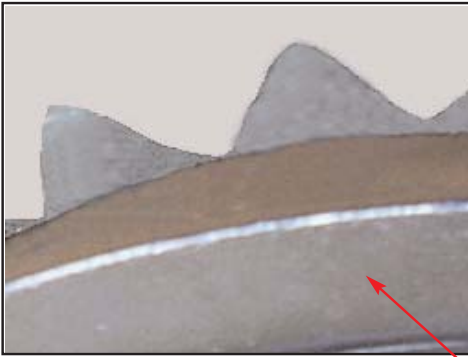
Overall Rim Dia. (In.)	Hole Dia. (In.)	Load Rating (Lbs.)	Insertion Depth	Material Thickness	Wheel Material	Overall Height (In.)	Part Number
4 <sup>3/32</sup>	3 <sup>3/8</sup>	165	3/4	0.063	Nylon	3/4	W9035ABLXFTCXXX
4 <sup>3/32</sup>	3 <sup>3/8</sup>	165	3/4	0.063	Nylon Hub TPR Tread	3/4	W9035LBLXFTCXXX
4 <sup>3/32</sup>	3 <sup>3/8</sup>	165	3/4	0.063	Nylon Hub/ Polyurethane Tread	3/4	W9035QBLXFTCXXX

**Driven  
To Exceed  
Expectations**

Illustration On  
Back Of Page

**800-558-0117**

**www.erwagner.com**



Metal teeth mesh with the wood, particle board, or other material for a secure fit.



Low profile recessed caster reduces the chance of unit tipping over.



**Driven  
to Exceed  
Expectations**

**800-558-0117**

**[www.erwagner.com](http://www.erwagner.com)**