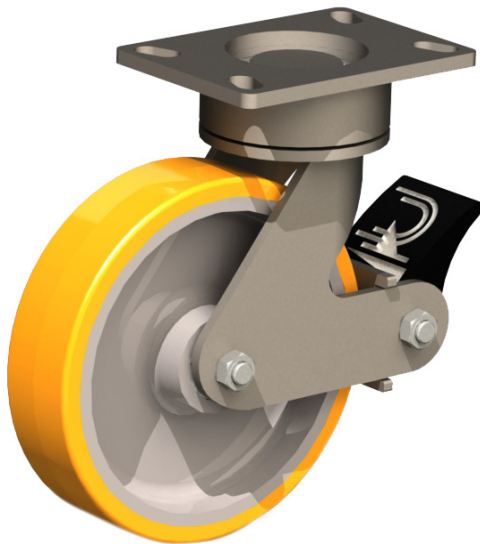




Maintenance Free - 57 Series Casters



- ▶ **Maintenance Free**
- ▶ **Easy Push/Pull**
- ▶ **Ergonomically Advanced**

Specifications

Swivel Section: Sealed precision ball bearing (3.50 inch OD) with hardened raceways and neoprene seals. Legs: ¼ inch x 2 inch laser cut from mild steel, CNC formed and continuously welded on the inside and outside of the yoke base

Kingpin: Kingpinless Style Design with precision ball bearing

Axle: ½ inch diameter, zinc plated, fine threads

Lubrication: Sealed ball bearing is lubricated and requires zero maintenance.

Wheel Diameter: 6 inches – 8 inches

Wheel Width: 2 inches – 2.19 inches

Overall Height: 8.31 inches- 10.13 inches

Swivel Lead: 2.75 inches standard

Finish: Zinc plated standard, wet paint and powder coat paint are options.

Top Plate: The top plate is fabricated from precision tubing. Laser cut mild steel holds the precision ball bearing firmly in place-4.5 inches x 6.25 inches standard size. Optional sizes available.

Caster Innovation

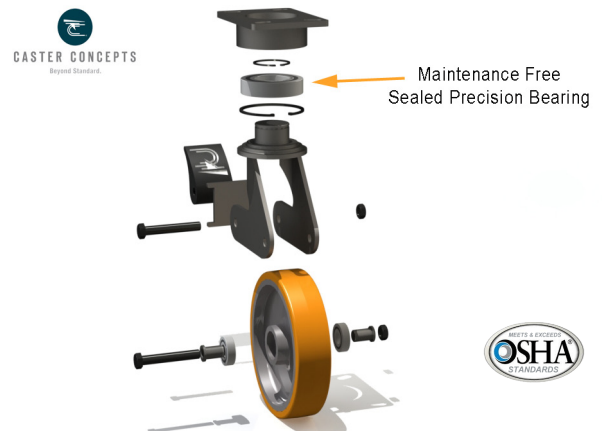
The 57 Series provides the ultimate maintenance free combination. The swivel section is made from a high quality precision ball bearing. The raceways of the bearing are hardened for long life and the bearing is then sealed with neoprene seals to assure the functional life of the swivel section. No greasing is necessary. The smooth swivel action combined with the extended lead help to lower ergonomic forces and minimize employee injuries.

Applications

Excellent for production racks (power transported, manually handled and mobile fixtures), parts bins, conveyor system, and other applications where maintenance free casters and ergonomics are concerns.

Options

Variations in top plate size are available. If you are looking for the greatest ergonomic improvement and willing to give some carrying capacity, look at a optional change in the lead to achieve this. Once you have the lead that works in your application, find the wheel with a sealed bearing that will minimize rolling resistance and add to the ergonomic design that you need.



Sealed Precision Caster Bearing by Caster Concepts