



# QUICKSHIP

## SHIPS IN 5 DAYS!

- Our most popular products ship in 5 working days
- Available in standard light gray
- For quantities greater than 5, consult BOSTONtec

### Workstations

PART NO.	HEIGHT ADJUSTABLE WORKSTATIONS
PB3060	30"d x 60"w, Medium Duty - Electric
PB3072	30"d x 72"w, Medium Duty - Electric
PB3672	36"d x 72"w, Medium Duty - Electric
PBH3060	30"d x 60"w, Heavy Duty - Electric
PBH3072	30"d x 72"w, Heavy Duty - Electric
AF3060	30"d x 60"w, Medium Duty - Manual

### Work Surfaces

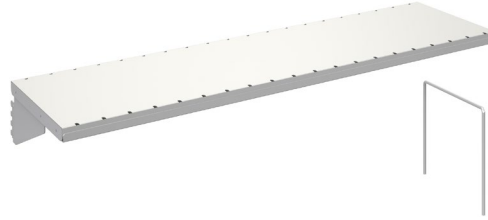
PART NO.	PREMIUM GRADE PLASTIC LAMINATE
3M3060	30"d x 60"w
3M3072	30"d x 72"w
3M3672	36"d x 72"w

### Feet or Casters

WORKSTATION MODEL	DEPTH	LEVELER FEET	CASTERS (2 LOCKING & 2 NON-LOCKING)
PB	30	FA30G	FD30G
	36	FA36G	FD36G
PBH	30	FA30I	FD30I
AF	30	FA30A	FD30A



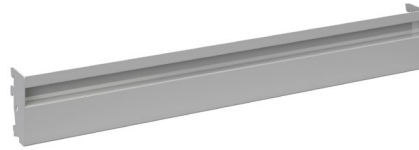
# Accessories



PART NO.	DESCRIPTION
DBUP53	Double Bay Slotted Uprights

PART NO.	DESCRIPTION
CSS1560	Corrugate Storage Shelf, 15"d x 60"w
CSSDIV	Corrugate Storage Shelf Divider

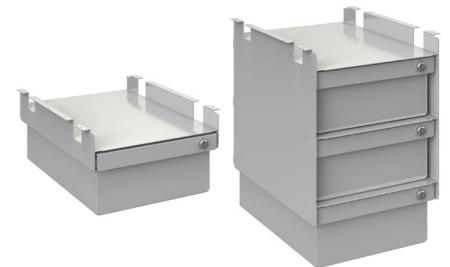
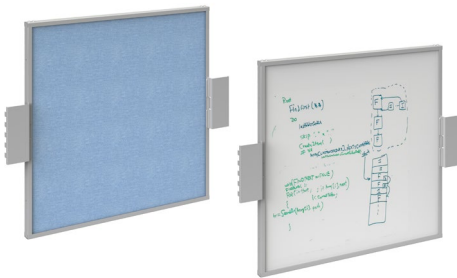
PART NO.	DESCRIPTION
SH1230	Steel Shelf, 12"d x 30"w
SH1530	Steel Shelf, 15"d x 30"w
DIV1215	Steel Shelf Divider



PART NO.	DESCRIPTION
PBHM08	Horizontal 8-Outlet Power Bar

PART NO.	DESCRIPTION
BR0429	Bin Rail

PART NO.	DESCRIPTION
SHR830	Spool Holder Rod



PART NO.	DESCRIPTION
BS2428	24" x 28" Backscreen
BS2428W	24" x 28" White Board

PART NO.	DESCRIPTION
CPU02	CPU Holder

PART NO.	DESCRIPTION
DRW06	Steel Drawer, 6" h x 18" d x 12" w
DRW36	3-6" h Drawers Stacked, 18" h x 18" d x 12" w



PART NO.	DESCRIPTION
FPDA	Articulating Flat Screen Monitor Arm

PART NO.	DESCRIPTION
PFSMA	Pneumatic Height Adjustable Flat Screen Monitor Arm

PART NO.	DESCRIPTION
LTE4802_60	General Purpose 2-Bulb Light, Electronic Ballast, 60" Tool Track