

# iCARaS

ON DEMAND  
ON PREMISE  
ON ANY CLOUD

## AUTOMOTIVE DEMAND MANAGEMENT

- ✓ Eliminate redundancy and reduce costs
- ✓ Minimize IT involvement in EDI activities
- ✓ Integrate inbound and outbound transactions
- ✓ Eliminate manual entry of orders, ASNs, and invoices
- ✓ Meet customer requirements and industry standards
- ✓ Compliance to trading partner requirements
- ✓ Job history queries and reporting

### The Complete Solution for Automotive EDI

**Anything-to-anything communications, translation, and preconfigured mapping for all trading partners**

Feature rich, robust and secure, iCARaS is loaded with comprehensive automotive reporting and built-in dashboards to inform and alert users to critical events. Archiving capabilities capture and maintain historical data for future reference and quick problem resolution.

iCARaS incorporates Electronic Data Interchange (EDI) communications and trading-partner-specific logic to offer a complete release management and automotive shipping solution; labeling and shipment scanning modules are available if needed. iCARaS was built for ERP gateway support, automated application integration and, best of all, you can implement without a lengthy consulting engagement.



**RADLEY**  
CORPORATION

# Robust Functionality Delivered Your Way

---

## Implementing & Supporting a Standard Product

iCARaS is a complete communications and translation solution with specific automotive functionality—not a consulting engagement to create one! Radley’s unique standard-product approach simplifies the implementation process and significantly reduces initial implementation time and project costs, as well as long term cost of ownership.

## Standard Product Predictability

iCARaS includes an extensive, continuously updated library of trading partners—new trading partners are being developed, tested and certified every week. Free up the resources currently spent on EDI mapping and long phone calls with trading partners. When a trading partner changes their EDI specifications, Radley incorporates those changes at no additional charge. Eliminate consulting expenses, custom programming charges and staffing challenges. Even if your business applications do not support automotive EDI, you can still enjoy full automotive functionality without an expensive consulting engagement.

Radley Corporation is an EDI company born in the automotive market. iCARaS was built to compliment ERP applications by including all necessary functionalities of automotive EDI, cum management, labeling, release accounting and shipping functionality as standard product. Flexible and configurable, when you use iCARaS you are compliant with your trading partners out of the box!

*Eliminate consulting costs, custom programming charges and staffing challenges.*

## On Demand, On Premise, or On Any Cloud

Whether deployed On Demand, On Premise or On a Cloud, Radley uses modern technology to create leaner cost models and lower your total cost of ownership. With On Demand there are no license fees or software maintenance bills. iCARaS is a true multi-tenant application, not a hidden managed service like many On Demand claims. iCARaS provides a true cost reduction reflected in our pricing.

iCARaS provides anything-to-anything communications, translation, and preconfigured mapping for all supported trading partners. Hundreds of trading partners are available and new trading partners are added at the same standard price—giving you predictable costs and no consulting engagements! Trading partners are developed, tested and conform to their published guidelines. All routine trading partner dictated changes are no-charge updates.

## Easy Updates

Radley’s On Premise customers easily download trading partner updates and apply using Radley’s patch delivery system. On Demand and EDI Managed Services customers let the Radley experts take care of all updates.



## Lower Your EDI Costs

Radley's standard product approach uses modern technology to lower your investment, deployment and implementation costs. Our On Demand offering provides further cost reduction by increased simplification of these tasks. Radley Corporation's automotive staff are the pros when it comes to EDI and significantly reducing your short- and long-term costs of EDI ownership.

## Integrated Scheduling & Document Archiving

### iScheduler

- Flexible scheduling and automation of any single or recurring task
- Comprehensive job history queries and reporting
- Email notifications based on status or completion
- Easy rescheduling of failed or interrupted jobs

### Document Journal

- Archive inbound and outbound EDI transactions, reports, audit logs, integration files and shipping documents
- Ability to reprocess or retransmit any archived transaction
- Easily identify missing or discrepant acknowledgment documents: built-in functionality associates acknowledgment document with its original transaction

**MMOG/LE**

We Can Help. Want to learn more?

Call 1-248-559-6858

## Technical Requirements

### On-Premise

Server Requirements:

- Windows 2012 R2 with Microsoft IIS
- Recommended Minimum Memory on server: 8GB
- Recommended disk space on server: 750MB + 100MB times the number of company databases
- Recommended Minimum Processor Speed: Multi-core CPU 2 GHZ

Client Requirements:

- Microsoft Internet Explorer 8 or higher
- Adobe Acrobat Reader or other PDF reader
- Microsoft Excel 2003 or higher (required if using spreadsheets)

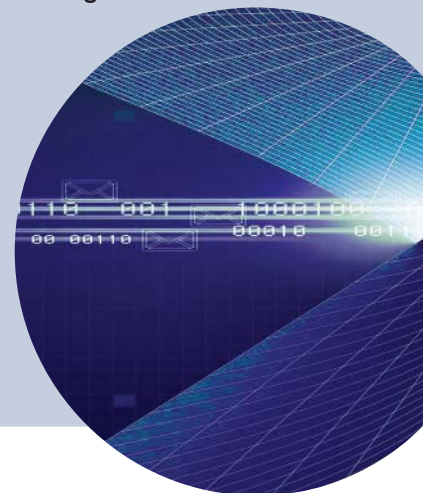
### On-Demand

Client Requirements:

- Microsoft Internet Explorer 8 or higher
- Adobe Acrobat Reader, or other PDF reader
- Microsoft Excel 2003 or higher (required if using spreadsheets)

### On Any Cloud

- Same server and client requirements as On-Premise



- ✓ Detailed reports for inbound transactions
- ✓ CUM/Demand management
- ✓ Extensive Demand Reporting
- ✓ Standard application integration gateways
- ✓ User-defined configurations

- ✓ Shipment processing includes documents, ASN & shipping history
- ✓ Barcode labeling & shipment scanning
- ✓ Shipment compliance reporting for internal process evaluation

# Industry-Specific Solutions

## Your Preferred Partner for Automotive EDI

Radley Corporation develops, deploys and supports a proven suite of EDI and barcode data collection software applications specifically designed to help you meet the Automotive industry's rigorous requirements. Our mission is to add value to your existing business systems by providing industry-specific functionality as a standard product.

**Radley provides industry-specific functionality as our standard product.**



## Speed Up

### Business Process Completion

- Eliminate redundancy and reduce costs
- Minimize IT involvement in daily EDI activities
- Integrate inbound and outbound transactions
- Eliminate manual order entry, ASNs, and invoices

## Keep Up

### with Trading Partner Demands

- Make timely decisions with confidence
- Multi-plant support for unlimited locations
- XML/web-based EDI APIs supported
- Manual release entry available for emergency orders and non-EDI Trading Partners



## Measure Up

### to Supplier Ratings Standards

- Meet or exceed on-going customer requirements and industry standards
- Guaranteed compliance to trading partner requirements
- Mitigate risk with Dashboard visibility to exceptions and day-to-day processes
- Ship the right quantity to the right location—every time!



- Established for the Automotive Industry
- Driven by the Automotive Industry
- Used for decades by many in the Automotive Industry

Radley's staff fully understands how critical EDI can be to your on-going operations. When you call Radley Product Support a trained product specialist always answers the phone. Critical issues, such as a problem with a shipment or ASN, are immediately prioritized for resolution. Easily accessible with a login on our website, Radley's Customer Portal is always available to report or track support issues and communicate with the Radley Support Team.

### Radley Corporation

4595 Broadmoor SE, Suite 115

Grand Rapids, MI 49512

Email: [contactus@radley.com](mailto:contactus@radley.com)

[www.radley.com/iCARaSOVeriew.htm](http://www.radley.com/iCARaSOVeriew.htm)

Tel: 616.541.6010

Fax: 616.554.9008

In EU/UK: +49 (0) 211 546922001



[www.facebook.com/RadleyCorporation](http://www.facebook.com/RadleyCorporation)



[www.linkedin.com/company/radley-corporation](http://www.linkedin.com/company/radley-corporation)



[www.twitter.com/RadleyGR](http://www.twitter.com/RadleyGR)



[www.youtube.com/user/RadleyCorporation](http://www.youtube.com/user/RadleyCorporation)