

Intralox ARB™ Sorter S7000

The Intralox ARB Sorter S7000 bi-directionally sorts a wide range of products at high throughput rates of up to 500* cases per minute. All moving parts on this “touchless” system are contained within the machine, below the conveying surface, providing gentle product handling and improved operator safety.

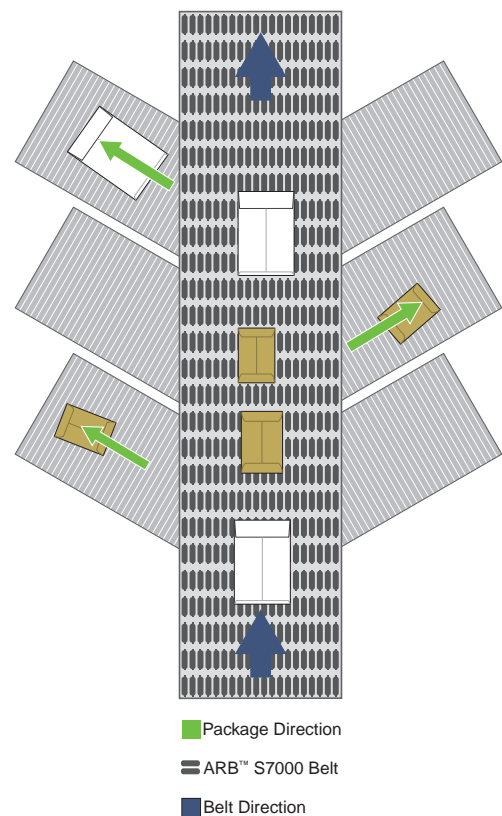
IDEAL SOLUTION FOR:

- Bi-directional sorting
 - with exits placed opposite each other at throughput rates of over 60 cases per minute
 - to divert zones with very close centerlines in the shortest footprint possible
- Uni- and bi-directional sorting
 - of products that typically cause problems on conventional sorters
 - of small products

KEY BENEFITS

- Sorts up to 500* cases per minute
- Handles a large range of product shapes, sizes and types
- Truly bi-directional diverts
- No-touch system preserves product quality
- Increased safety, no moving parts outside of belt
- Modular design provides placement flexibility

**Actual throughput depends on product size and local conditions*



intralox®

EQUIPMENT CAPABILITIES

Throughput	<ul style="list-style-type: none"> • Up to 200 products per minute with 12 in. (305 mm) product length • Up to 500 products per minute with 4 in. (100 mm) product length
Product Bottom Surface	No restrictions
Product Dimensions	
Minimum:	2 in. x 2 in. (50 mm x 50 mm)
Maximum:	No restrictions
Weight:	No restrictions
Minimum Product Gapping	2 in. (50 mm)
Divert Spacing	(center to center) Belt width + longest package length
Induction	Exits can be as close as 16 in. (400 mm) from sorter infeed
Available Configurations	<ul style="list-style-type: none"> • Uni-directional or bi-directional • Standard profile or high profile • Washdown stainless steel or painted carbon steel

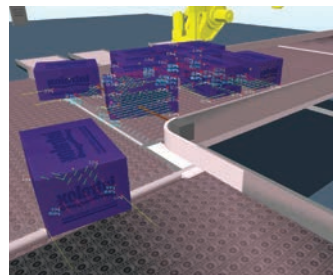
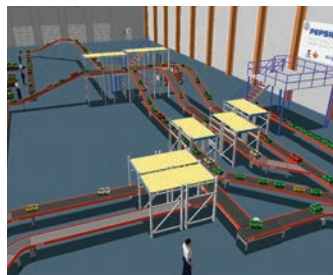
WORKING PRINCIPLE

The ARB Sorter S7000 can divert an item efficiently moving it to the left or right of the conveyor belt without the use of rails, shoes or other devices that touch the product.

Products running on ARB technology rest on free-spinning angled rollers rather than on the belt surface. These rollers extend above and below the belt surface and are positioned at an angle in relation to the direction of belt travel. Rollers that are (selectively) activated by the carryway surface below move products across the belt to the left or to the right.

When Intralox ARB™ equipment solutions are applied to a full line layout they can enable radical improvements of layout concepts that are not possible with traditional technology.

Consult Intralox at the start of your next project.



YOUR **PARTNER** FOR THE SMARTEST LINE LAYOUTS

Additional country- and industry-specific free phone numbers available at intralox.com

Australia: +1 800 128742 • **Brazil:** 0800 7714325 • **China: (north)** 10800 711 0100 • **(south)** 10800 110 0100
Europe: +800 5544 4455 • **Japan:** 0120 779 040 • **Mexico:** 001 800 0100354 • **New Zealand:** 0800 449173 •
United States & Canada: +1 888 427 2358